

WEDNESDAY, 31 JANUARY 2024

**TO: THE CABINET MEMBER FOR CABINET MEMBER FOR
TRANSPORT, WASTE AND INFRASTRUCTURE SERVICES**

I HEREBY SUMMON YOU TO ATTEND A MEETING OF THE
**CABINET MEMBER FOR TRANSPORT, WASTE AND
INFRASTRUCTURE SERVICES** WHICH WILL BE HELD IN
**CABINET MEMBER OFFICE & REMOTE - COUNTY HALL,
CARMARTHEN. SA31 1JP., AT 2.00 PM, ON WEDNESDAY, 7TH
FEBRUARY, 2024** FOR THE TRANSACTION OF THE BUSINESS
OUTLINED ON THE ATTACHED AGENDA.

Wendy Walters

CHIEF EXECUTIVE

Democratic Officer:	Emma Bryer
Telephone (direct line):	01267 224029
E-Mail:	ebryer@carmarthenshire.gov.uk

Wendy Walters Prif Weithredwr, *Chief Executive*,
Neuadd y Sir, Caerfyrddin. SA31 1JP
County Hall, Carmarthen. SA31 1JP

A G E N D A

- 1. DECLARATIONS OF PERSONAL INTEREST**
- 2. TO SIGN AS A CORRECT RECORD THE DECISION RECORD OF THE MEETING HELD ON THE 9TH JANUARY, 2024** 3 - 4
- 3. INTRODUCTION OF PROPOSED SPEED HUMPS AT PONTHENRI** 5 - 76

Note:- The press and public are not entitled to attend the meeting. The decision record will be published normally within 3 working days.

CABINET MEMBER FOR TRANSPORT, WASTE AND INFRASTRUCTURE SERVICES

9 JANUARY 2024

PRESENT: Councillor E.G. Thomas (Cabinet Member).

The following officers were in attendance:

G. Lewis, Waste Strategy & Policy Manager;
J. Owen, Democratic Services Officer.

Virtual Meeting: 11:00am – 11:10am

1. DECLARATIONS OF PERSONAL INTEREST

There were no declarations of personal interest.

**2. TO SIGN AS A CORRECT RECORD THE DECISION RECORD OF THE
MEETING HELD ON THE 14TH SEPTEMBER 2023**

RESOLVED that the decision record of the meeting of the Cabinet Member for Transport, Waste and Infrastructure Services held on the 14th September, 2023 be signed as a correct record.

3. GARDEN WASTE CHARGES FOR 2024/2025 SEASON

The Cabinet Member considered a report which outlined the charges and provided a proposal for the garden waste charges for the 2024/2025 garden waste collection season.

The report stated that garden waste collection service was carried out between the months of March and November each year. In preparation for the next garden waste season i.e. March 2024 - November 2024 the price for the service was set in accordance with the financial process and in line with the yearly charging digest procedure which fed into the overall financial position of the local authority for the upcoming financial year, scrutinised through consultation and the political process.

The Cabinet Member noted that the timing of the garden waste service did not lend itself to the financial timeline for budget setting regarding the final sign off timeline. As the garden waste service opens to customers in January every year to prepare for service demand, delivery and collection of bins, invoice payments etc. and consequently the charge for the upcoming season needs to be sanctioned sooner and ahead of January 2024.

The report included information, data and trends in regard to the customer base which acknowledged that the data for 2023/2024 garden waste service had shown some stagnation in the trend for the customer numbers and that promotional work would be required to increase from previous years.

It was reported that as a reduction in customer base was deemed likely as higher service charges combined with other cost of living expenses may have resulted in even further decreases in customer base, in 2023/2024 a cautious approach of not implementing the full 10% validation was taken and a reduction in the increase to 5% onto 2022/2023 costs for 2023/2024 season was decided. It was reported that a reduction in customer base would be a detriment to the overall annual recycling tonnage figures which may also have a detrimental impact on the annual recycling rate for Carmarthenshire.

Whilst a validation of 4% was proposed on chargeable services for 2024/2025, in consideration of the data of the customer uptake, the service sought authorisation from the Cabinet Member to retain the current charge for the service into next season and charge the same amount for 2024/2025.

RESOLVED that the proposed garden waste service charges for 2024/2025 season as set out within the report, be implemented ahead of the final budget consultation and full council meeting in early 2024 which would sanction the budget setting for the Authority for 2024/2025 fiscal year.

CABINET MEMBER

DATE

Cabinet Member Decision Making Meeting 07/02/24

Cabinet Member:	Portfolio	
Cllr. Edward Thomas	Cabinet Member for Transport, Waste and Infrastructure Services	
Subject		
INTRODUCTION OF PROPOSED SPEED HUMPS AT PONTHENRI.		
Purpose:		
The proposed traffic calming includes two round top road humps and two raised plateaus. The traffic calming measures have been advertised for public comment and one objection was received. The objection relates to one specific hump in particular. This report considers that objection.		
Recommendation:		
It is recommended that the objection is noted and that the traffic calming scheme proceeds with the inclusion of all the road humps/plateaus as listed above.		
Reasons:		
The introduction of traffic calming will address long-standing concerns with regards traffic speeds and pedestrian safety raised as part of the consultation work conducted within the local community under the Safe Routes in Communities scheme development/implementation.		
The introduction of traffic calming in Ponthenri is supported by the local member.		
Name of Head of Service: Daniel W John	Head of Environmental Infrastructure • Place and Infrastructure	E-mail dwjohn@carmarthenshire.gov.uk
Report Author: Thomas Evans	Transport Planner – Strategy & Infrastructure	E-mail tjevans@carmarthenshire.gov.uk

Declaration of Personal Interest (if any):

Dispensation Granted to Make Decision (if any):

(If the answer is yes exact details are to be provided below:)

DECISION MADE:

That the objections be noted, and the traffic calming scheme proceed with all vertical measures as proposed.

Signed: _____

DATE: _____

CABINET MEMBER

The following section will be completed by the Democratic Services Officer in attendance at the meeting

Recommendation of Officer adopted	YES / NO
Recommendation of the Officer was adopted subject to the amendment(s) and reason(s) specified:	
Reason(s) why the Officer's recommendation was not adopted:	

Cabinet Member Decision Meeting

Date: 07/02/24

EXECUTIVE SUMMARY

Proposed Speed Humps at Ponthenri.

Brief Summary of Purpose of Report

The purpose of this report is to consider the objection received to the inclusion of a road top hump on (B4317) Myrtle Hill. This hump was put forward as part of a series of measures to slow traffic speeds and enhance pedestrian safety throughout the village of Ponthenri.

There is a statutory requirement to advertise proposals for road humps for public comment and objection. The proposals for Ponthenri received one objection from one household.

Background

Myrtle Hill is a well-used residential road that connects Ponthenri with Pontyberem to the North. The section where the hump is planned to be located is at the bottom of a steep hill that leads directly into the most densely populated area of this section of Ponthenri.

Since 17th September 2023 the road has been reduced to a 20mph limit and there are Driver Feedback Signs (DFS) located at certain points along the road to remind drivers of their current speed.

Notwithstanding the speed limit in place, there have been longstanding concerns from the local community regarding inappropriate vehicle speeds along the road. Something that was voiced during public consultations events for the development of the Safe Routes in Communities funding bid and supported by the local member during ongoing discussions.

Traffic Calming Proposal - Funding

The County Council submitted the speed humps/plateaus as part of the Safe Routes in Communities funding bid (the bid includes a wide range of measures to enhance and encourage active travel within Ponthenri) and were successful in receiving the full allocation of funds from Welsh Government for the implementation of all measures contained within the scheme bid drawing plan.

This funding must be spent in the 23/24 financial year otherwise it will be returned to Welsh Government.

Traffic Calming Proposals – Current Design

Following comments received during the initial consultation, and in liaison with the local member, the traffic calming proposals were put forward and split into 2 location plans (as presented in Appendix 1 and Appendix 2).

The only objection was to the introduction of the proposed round top hump situated near 48 Myrtle Hill. The plan for this is contained with Statutory consultation 1 or Appendix 1 in relation to this document.

Traffic calming proposals which include road humps must be advertised for public comment and objection in accordance with the Highways (Road Humps) Regulations 1999. One letter of objection with a list of reasons was subsequently received from a singular household. This is discussed below.

Discussion of Objections

During the statutory consultation period the Council’s Head of Administration and Law received one objection letter from one household. These are discussed below with the removal of personal details. Full copies of the objections will be available at the Cabinet Member meeting.

Summary of Objections Received	
Objection	Discussion
<p>Objection 1 Not a good idea at the bottom of a hill</p>	<p>The hump is not considered to be located where it will cause any difficulties for residents accessing the driveway of local properties. It is also located just prior to the main residential area of Ponthenri (along Myrtle Hill and is situated to slow traffic prior to them entering this more populated area.</p> <p>The speed limit for the road 20mph but concerns remain that compliance will nevertheless continue to be a challenge. Road humps are known to be very effective in reducing traffic speeds. Traffic Calming (publishing.service.gov.uk)</p> <p>In addition, the hump will be located where lighting is sufficient to illuminate the measure along with all relevant warning signs. Drainage will also be considered prior to construction to ensure the current situation is not worsened.</p> <p>Air Quality In response to the objection regarding air quality I can confirm the following:</p> <p>The NICE report referenced in the objection notes: Recommendation 1.5.2 <i>Some evidence on physical speed reduction measures like humps and bumps suggested that</i></p>
<p>Objection 2 More noise and pollution after hump</p>	
<p>Objection 3 Drains are not good enough in wet weather</p>	
<p>Objection 4 Animals transported by tractor or horse lorry may be injured.</p>	
<p>Objection 5 Pollution from fumes can cause health problems</p>	
<p>Objection 6 Hump may cause reversing issues</p>	
<p>Objection 7 This is a main road to the M4 not a village street</p>	

<p>Objection 8 What happened to a bypass scheme that was muted in the 60's that would bypass Ponthenri and link to Cwmmawr.</p>	<p><i>individual measures may increase motor vehicle emissions by encouraging decelerations and accelerations. But evidence from area-wide schemes does not back this up. Air pollution: outdoor air quality and health (nice.org.uk)</i></p>
<p>Objection 9 A minibus has overtaken me in Carway near speed humps.</p>	<p>A study undertaken by the TRL also concluded that: <i>Urban traffic calming measures have been mainly introduced on residential roads with low traffic flows. Consequently, even though traffic calming generally results in increased emissions per vehicle it is very unlikely that that it would result in poor local air quality. TRL482.pdf</i></p>
<p>Objection 10 Although we have 20mph now I still see cars and motorbikes overtaking over speed limits.</p>	<p>This potential increase in vehicle emissions should be considered in the context of air quality within the area, the creation of lower speed environments which encourage more walking and cycling and a reduction in traffic flows, and balanced with the wider community concerns regarding road safety.</p> <p>Traffic Noise A study undertaken by the Department for Transport found that: <i>Based on an assumed reduction in vehicle speed, estimates of the change in traffic noise levels following the installation of cushions or humps showed that, where the traffic flow consists of all cars, substantial reductions would be expected. As the percentage of commercial vehicles increases to 10 per cent, together with an increase in the percentage of buses to 1 per cent, these reductions deteriorate dramatically. Traffic Calming (publishing.service.gov.uk)</i></p>
<p>Objection 11 If it was dark motorists and motorbikes would not be able to see the humps.</p>	<p>Studies confirm road humps to be very effective at reducing vehicle speeds and vehicles travelling over road humps at appropriate speeds should not suffer damage provided the humps conform to regulations. Traffic Calming (publishing.service.gov.uk)</p>

Speed Data

Recent speed survey data (January 2024) has recorded an average speed of 28.4mph (currently a 20mph zone) in the proposed hump location with the 85th percentile measuring 35.6mph. The speed data has been included as an attachment to this report.

Road Safety Audit

A Stage 2 Road Safety Audit has been undertaken for the proposed traffic calming and no adverse comments were made with regard to the scheme design. Should the scheme progress to implementation a Stage 3 Road Safety Audit would be undertaken following completion.

Recommendation

It is recommended that the objections be noted and that the Order be made.

DETAILED REPORT ATTACHED ?

Appendix 1 – Statutory Consultation 2 plan detailing location of other proposed speed humps in Ponthenri.
Appendix 2 – Statutory Consultation 1 plan detailing location of road hump being objected to.
Appendix 3 – Full Safe Routes in Communities scheme plan.
Appendix 4 – Speed results data.

IMPLICATIONS

ALL IMPLICATIONS REQUIRE SIGN OFF BY THE DIRECTOR OR HEAD OF SERVICE

I confirm that other than those implications which have been agreed with the appropriate Directors / Heads of Service and are referred to in detail below, there are no other implications associated with this report :

Signed:

Head of Environmental Infrastructure

Policy, Crime & Disorder and Equalities	Legal	Finance	ICT	Risk Management Issues	Staffing Implications	Physical Assets	Bio-diversity & Climate Change
YES	YES	YES	NONE	NONE	NONE	YES	NONE

Policy, Crime & Disorder

The Objector has highlighted health concerns and the perceived impact of road humps.

Due consideration needs to be given of our responsibilities under the Public Sector Equality Duty of the Equality Act (2010) and specifically in terms of Age and Disability. This will be raised specifically with the Cabinet Member and any mitigation measures will also be discussed.

Legal

The proposals have been formally published in accordance with the Highways Act 1980 and Highways (Road Humps) Regulations 1999.

Finance

The proposal has been developed and will be delivered via Transport for Wales Safe Routes in Communities grant and must be spent within the 23/24 financial year.

Physical Assets

Traffic calming features will be maintained through normal service budgets.

CONSULTATIONS

I confirm that the appropriate consultations have taken in place and the outcomes are as detailed below

Signed: D.W.John Head of Environmental Infrastructure

1. Scrutiny Committee – N/A

2. Local Member(s) - Cllr. Alex Evans (local member for Glyn ward) supports the proposals.

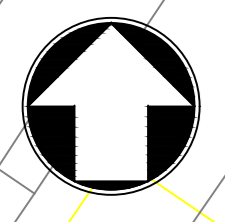
3. Community / Town Council – Llanelli Rural Council - No objections received

4. Relevant Partners - key stakeholder groups consulted as part of the Traffic Order process are listed below - no objections received.

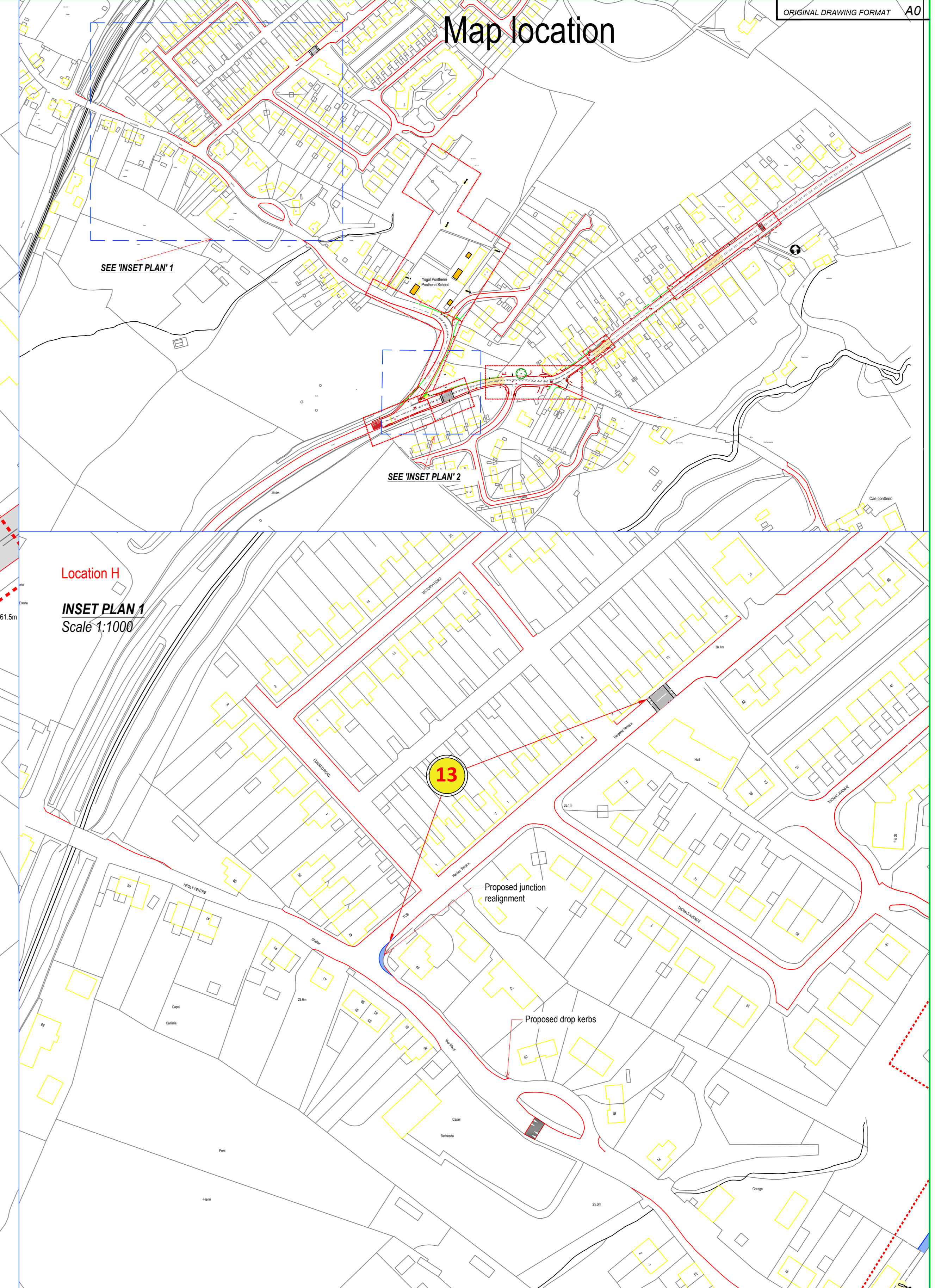
- Carmarthenshire Roads Policing Unit
- Mid and West Wales Fire Brigade
- Welsh Ambulance Services NHS Trust
- Freight Transport Association
- Road Haulage Association Limited
- Carmarthenshire Disabled Access Group
- Bus Operators: First Bus, 1st Choice, Gwynne Price, Alan Davies Coaches, M. Hayward, Lewis Rhydlewis.

5. Staff Side Representatives and other Organisations - N/A

**Section 100D Local Government Act, 1972 – Access to Information
List of Background Papers used in the preparation of this report: None**

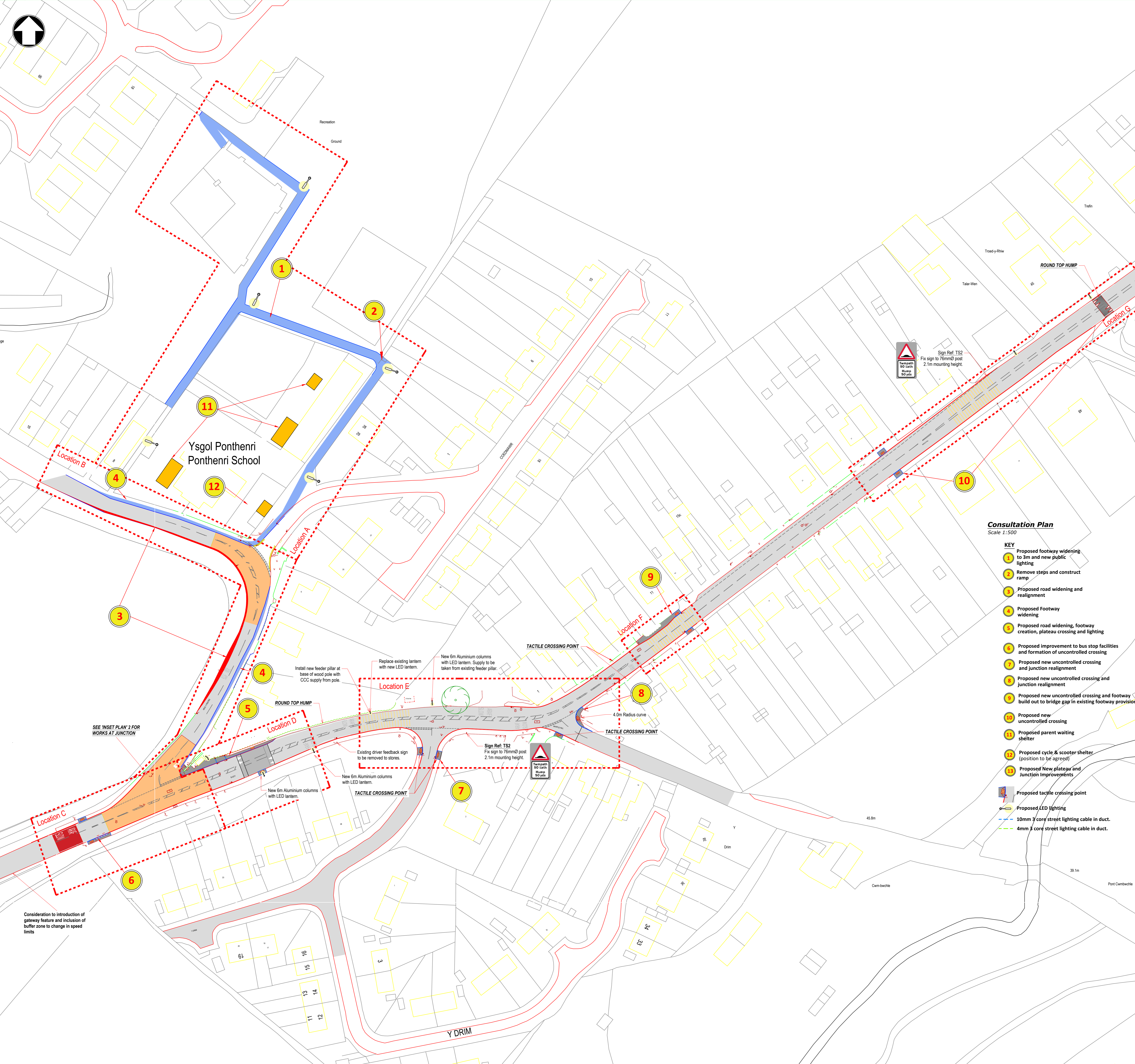


Map location



Location H
INSET PLAN 1
Scale 1:1000

INSET PLAN 2
Scale 1:200



Consultation Plan Scale 1:500

KEY

- 1 Proposed footway widening to 3m and new public lighting
- 2 Remove steps and construct ramp
- 3 Proposed road widening and realignment
- 4 Proposed Footway widening
- 5 Proposed road widening, footway creation, plateau crossing and lighting
- 6 Proposed improvement to bus stop facilities and formation of uncontrolled crossing
- 7 Proposed new uncontrolled crossing and junction realignment
- 8 Proposed new uncontrolled crossing and junction realignment
- 9 Proposed new uncontrolled crossing and footway build out to bridge gap in existing footway provisions.
- 10 Proposed new uncontrolled crossing
- 11 Proposed parent waiting shelter
- 12 Proposed cycle & scooter shelter (position to be agreed)
- 13 Proposed New plateau and Junction Improvements
- 14 Proposed tactile crossing point
- 15 Proposed LED lighting
- 16 10mm 3 core street lighting cable in duct.
- 17 4mm 3 core street lighting cable in duct.

Consideration to introduction of gateway feature and inclusion of buffer zone to change in speed limits

SEE INSET PLAN 2 FOR WORKS AT JUNCTION

Ysgol Ponthenri
Ponthenri School

Install new leader pillar at base of wood pole with COC supply from pole.

Replace existing lantern with new LED lantern.

New 6m Aluminium columns with LED lantern. Supply to be taken from existing leader pillar.

Sign Ref: TS2
Fix sign to 76mmØ post
2.1m mounting height.

Sign Ref: TS1
Fix sign to 76mmØ wide based post
2.1m mounting height
(External illumination required)

Sign Ref: TS2
Fix sign to 76mmØ post
2.1m mounting height.

Sign Ref: TS1
Fix sign to 76mmØ wide based post
2.1m mounting height
(External illumination required)

Sign Ref: TS2
Fix sign to 76mmØ post
2.1m mounting height.

Sign Ref: TS1
Fix sign to 76mmØ wide based post
2.1m mounting height
(External illumination required)

Sign Ref: TS2
Fix sign to 76mmØ post
2.1m mounting height.

Sign Ref: TS1
Fix sign to 76mmØ wide based post
2.1m mounting height
(External illumination required)

Sign Ref: TS2
Fix sign to 76mmØ post
2.1m mounting height.

Sign Ref: TS1
Fix sign to 76mmØ wide based post
2.1m mounting height
(External illumination required)

Sign Ref: TS2
Fix sign to 76mmØ post
2.1m mounting height.

Sign Ref: TS1
Fix sign to 76mmØ wide based post
2.1m mounting height
(External illumination required)

Sign Ref: TS2
Fix sign to 76mmØ post
2.1m mounting height.

Sign Ref: TS1
Fix sign to 76mmØ wide based post
2.1m mounting height
(External illumination required)

Sign Ref: TS2
Fix sign to 76mmØ post
2.1m mounting height.

Sign Ref: TS1
Fix sign to 76mmØ wide based post
2.1m mounting height
(External illumination required)

Sign Ref: TS2
Fix sign to 76mmØ post
2.1m mounting height.

Sign Ref: TS1
Fix sign to 76mmØ wide based post
2.1m mounting height
(External illumination required)

Sign Ref: TS2
Fix sign to 76mmØ post
2.1m mounting height.

Sign Ref: TS1
Fix sign to 76mmØ wide based post
2.1m mounting height
(External illumination required)

Sign Ref: TS2
Fix sign to 76mmØ post
2.1m mounting height.

Sign Ref: TS1
Fix sign to 76mmØ wide based post
2.1m mounting height
(External illumination required)

Sign Ref: TS2
Fix sign to 76mmØ post
2.1m mounting height.

Sign Ref: TS1
Fix sign to 76mmØ wide based post
2.1m mounting height
(External illumination required)

Sign Ref: TS2
Fix sign to 76mmØ post
2.1m mounting height.

Sign Ref: TS1
Fix sign to 76mmØ wide based post
2.1m mounting height
(External illumination required)

Sign Ref: TS2
Fix sign to 76mmØ post
2.1m mounting height.

Sign Ref: TS1
Fix sign to 76mmØ wide based post
2.1m mounting height
(External illumination required)

Sign Ref: TS2
Fix sign to 76mmØ post
2.1m mounting height.

Sign Ref: TS1
Fix sign to 76mmØ wide based post
2.1m mounting height
(External illumination required)

Sign Ref: TS2
Fix sign to 76mmØ post
2.1m mounting height.

Sign Ref: TS1
Fix sign to 76mmØ wide based post
2.1m mounting height
(External illumination required)

Sign Ref: TS2
Fix sign to 76mmØ post
2.1m mounting height.

Sign Ref: TS1
Fix sign to 76mmØ wide based post
2.1m mounting height
(External illumination required)

© Hwylfaint y Gerni a hysawr cofreir ddiab 2022 Ardd
Ordnance Survey 100023377
© Crown copyright and database rights 2022 Ordnance
Survey 100023377

SAFER ROUTES IN THE COMMUNITY PONTHENRI

BID DRAWING 2023/2024

REV	DATE	REVISION DESCRIPTION	REV BY	CHECKED	DATE C/D
1	24/01/23	VP			

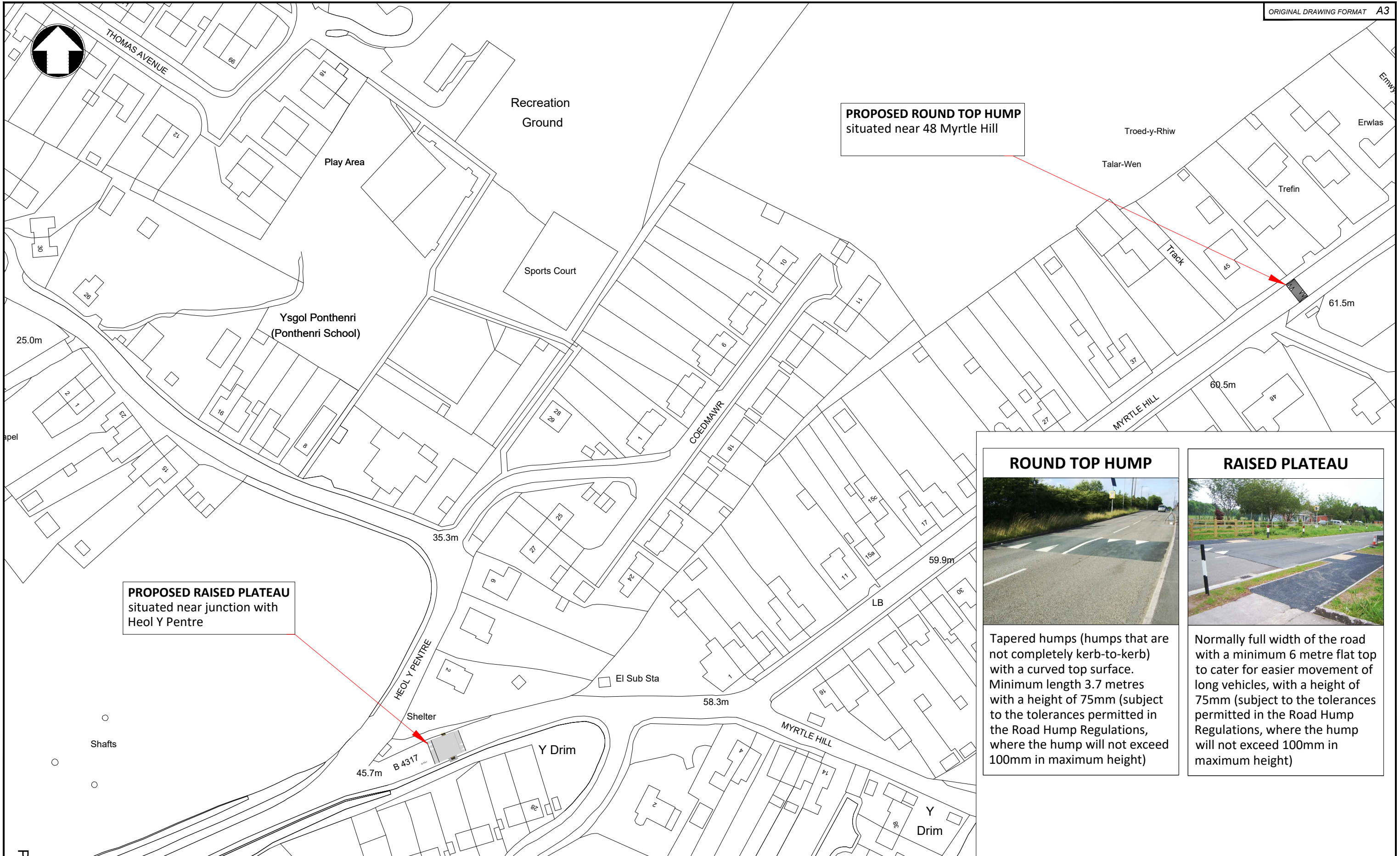
Make By	Date	Checked	Date	Approved	Date
RW	24/01/23	VV	24/01/23	VP	24/01/23

Scale	1:500	Project No.	80/0040/274
Drawing No.	BID 01	Revision	


This page is intentionally left blank



This page is intentionally left blank



ROUND TOP HUMPS



Tapered humps (humps that are not completely kerb-to-kerb) with a curved top surface. Minimum length 3.7 metres with a height of 75mm (subject to the tolerances permitted in the Road Hump Regulations, where the hump will not exceed 100mm in maximum height)

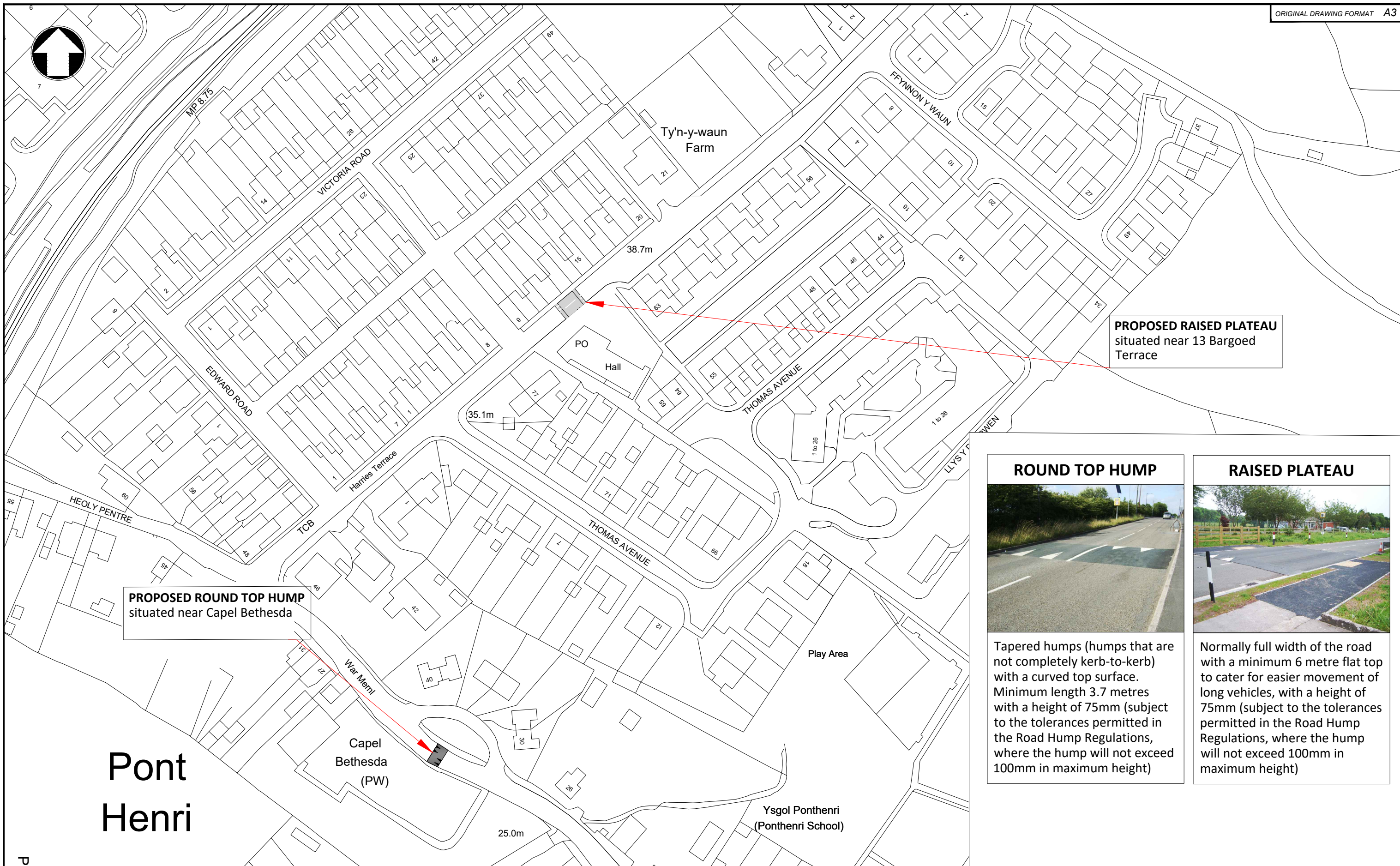
RAISED PLATEAU



Normally full width of the road with a minimum 6 metre flat top to cater for easier movement of long vehicles, with a height of 75mm (subject to the tolerances permitted in the Road Hump Regulations, where the hump will not exceed 100mm in maximum height)

REV	DATE	REVISION DESCRIPTION	REV BY	CHECKED	DATE CHD
Status					
CONSULTATION					
Made By	Date	Checked	Date	Authorised	Date
ME	26/04/23	VV	26/04/23	VP	26/04/23
Scale			Project no.		
1:1250			80/0040/538		
			Drawing no.		Revision
			-		-


This page is intentionally left blank



PROPOSED RAISED PLATEAU
situated near 13 Bargoed Terrace

PROPOSED ROUND TOP HUMP
situated near Capel Bethesda

ROUND TOP HUMP



Tapered humps (humps that are not completely kerb-to-kerb) with a curved top surface. Minimum length 3.7 metres with a height of 75mm (subject to the tolerances permitted in the Road Hump Regulations, where the hump will not exceed 100mm in maximum height)

RAISED PLATEAU



Normally full width of the road with a minimum 6 metre flat top to cater for easier movement of long vehicles, with a height of 75mm (subject to the tolerances permitted in the Road Hump Regulations, where the hump will not exceed 100mm in maximum height)

Pont Henri

Gwasanaethau Dylunio Peirianegol



Engineering Design Services

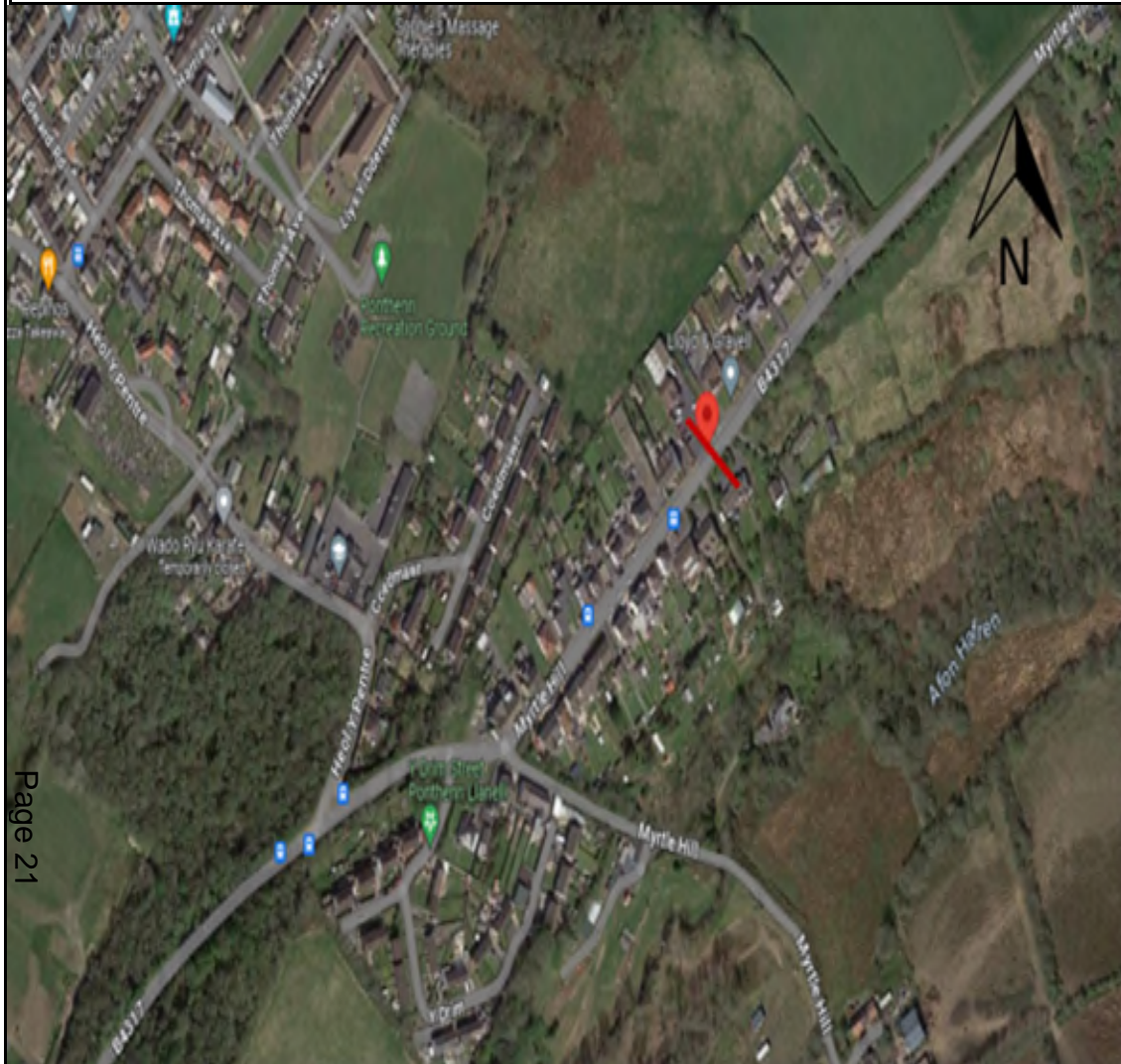
Adrian Harries B.Eng (Hons). C.Eng, M.I.C.E
Rheolwr Gwasanaethau Dylunio Proffesiynol
Professional Design Services Manager,
Adran Amgylchedd, Bloc 1,
Parc Myrddin, Waun Dew,
Caerfyrddin
Sir Caerfyrddin SA31 1HQ
Environment Department, Block 1,
Parc Myrddin, Richmond Terrace,
Carmarthen,
Carmarthenshire SA31 1HQ

Project
SAFER ROUTES IN THE COMMUNITY
Ponthenri 2023-2024

Title
PROPOSED VERTICAL MEASURES

REV	DATE	REVISION DESCRIPTION	REV BY	CHECKED	DATE CHD
Status CONSULTATION					
Made By	Date	Checked	Date	Authorised	Date
ME	26/04/23	VV	26/04/23	VP	26/04/23
Scale		Project no.			
1:1250		80/0040/538			
		Drawing no.		Revision	
		-		-	

This page is intentionally left blank



Job Name/ Title		Site	0	Location											
17 January 2024		to	00/01/00	Direction	Eastbound										
TIME PERIOD	TOTAL VEHICLES	MOTOR-CYCLES	CARS OR CAR-BASED LGV	LIGHT GOODS VEHICLES	BUSES	TWO AXLE, SIX TYRE, RIGID	THREE AXLE RIGID	FOUR OR MORE AXLE RIGID	FOUR OR LESS AXLE ARTIC	FIVE AXLE ARTIC	SIX OR MORE AXLE ARTIC	FIVE OR LESS AXLE MULTI-TRAILER ARTIC	SIX AXLE MULTI-TRAILER ARTIC	SEVEN OR MORE AXLE ARTIC	
17 January 2024															
0000	1	0	1	0	0	0	0	0	0	0	0	0	0	0	
0100	2	0	1	1	0	0	0	0	0	0	0	0	0	0	
0200	0	0	0	0	0	0	0	0	0	0	0	0	0	0	
0300	3	1	1	0	0	0	1	0	0	0	0	0	0	0	
0400	15	1	12	1	0	0	0	0	1	0	0	0	0	0	
0500	35	0	29	3	0	0	1	0	2	0	0	0	0	0	
0600	75	0	55	18	0	0	2	0	0	0	0	0	0	0	
0700	179	1	138	34	1	1	3	0	1	0	0	0	0	0	
0800	218	0	179	28	3	4	2	0	2	0	0	0	0	0	
0900	117	1	95	20	0	1	0	0	0	0	0	0	0	0	
1000	118	0	95	20	0	2	0	0	1	0	0	0	0	0	
1100	105	0	87	17	1	0	0	0	0	0	0	0	0	0	
1200	89	0	70	16	0	1	2	0	0	0	0	0	0	0	
1300	123	1	97	21	1	1	1	0	1	0	0	0	0	0	
1400	102	0	84	16	0	0	0	0	1	0	0	1	0	0	
1500	146	1	119	20	1	2	2	0	1	0	0	0	0	0	
1600	196	3	158	27	1	3	1	0	3	0	0	0	0	0	
1700	189	0	167	19	0	1	0	0	1	0	1	0	0	0	
1800	102	1	91	9	0	1	0	0	0	0	0	0	0	0	
1900	70	0	66	4	0	0	0	0	0	0	0	0	0	0	
2000	48	0	45	3	0	0	0	0	0	0	0	0	0	0	
2100	27	0	26	1	0	0	0	0	0	0	0	0	0	0	
2200	18	0	16	2	0	0	0	0	0	0	0	0	0	0	
2300	9	0	8	1	0	0	0	0	0	0	0	0	0	0	
07-19	1684	8	1380	247	8	17	11	0	11	0	1	1	0	0	
06-22	1904	8	1572	273	8	17	13	0	11	0	1	1	0	0	
06-00	1931	8	1596	276	8	17	13	0	11	0	1	1	0	0	
00-00	1987	10	1640	281	8	17	15	0	14	0	1	1	0	0	

Job Name/ Title		Site	0	Location	()										
17 January 2024		to	00/01/00	Direction	Eastbound										
TIME PERIOD	TOTAL VEHICLES	MOTOR-CYCLES	CARS OR CAR-BASED LGV	LIGHT GOODS VEHICLES	BUSES	TWO AXLE, SIX TYRE, RIGID	THREE AXLE RIGID	FOUR OR MORE AXLE RIGID	FOUR OR LESS AXLE ARTIC	FIVE AXLE ARTIC	SIX OR MORE AXLE ARTIC	FIVE OR LESS AXLE MULTI-TRAILER ARTIC	SIX AXLE MULTI-TRAILER ARTIC	SEVEN OR MORE AXLE ARTIC	
18 January 2024															
0000	2	0	2	0	0	0	0	0	0	0	0	0	0	0	
0100	2	0	0	1	0	0	1	0	0	0	0	0	0	0	
0200	2	0	1	1	0	0	0	0	0	0	0	0	0	0	
0300	4	1	2	1	0	0	0	0	0	0	0	0	0	0	
0400	13	1	10	0	0	0	0	0	2	0	0	0	0	0	
0500	32	0	27	2	0	0	0	0	3	0	0	0	0	0	
0600	76	0	53	22	0	0	0	0	0	0	1	0	0	0	
0700	171	1	134	32	1	0	3	0	0	0	0	0	0	0	
0800	220	0	178	36	2	3	1	0	0	0	0	0	0	0	
0900	125	0	102	18	1	2	1	0	0	0	0	1	0	0	
1000	107	0	78	24	2	0	3	0	0	0	0	0	0	0	
1100	98	0	69	26	0	1	2	0	0	0	0	0	0	0	
1200	100	0	84	15	0	0	1	0	0	0	0	0	0	0	
1300	121	0	94	20	2	0	2	0	2	0	0	1	0	0	
1400	122	0	99	20	0	1	2	0	0	0	0	0	0	0	
1500	159	0	128	23	1	3	2	0	2	0	0	0	0	0	
1600	197	1	160	33	2	0	0	0	1	0	0	0	0	0	
1700	139	1	119	16	0	1	1	0	0	0	1	0	0	0	
1800	106	0	96	9	0	0	0	0	1	0	0	0	0	0	
1900	65	0	59	3	0	0	3	0	0	0	0	0	0	0	
2000	42	0	41	1	0	0	0	0	0	0	0	0	0	0	
2100	34	0	30	3	0	0	1	0	0	0	0	0	0	0	
2200	23	0	20	3	0	0	0	0	0	0	0	0	0	0	
2300	9	0	8	1	0	0	0	0	0	0	0	0	0	0	
07-19	1665	3	1341	272	11	11	18	0	6	0	1	2	0	0	
06-22	1882	3	1524	301	11	11	22	0	6	0	2	2	0	0	
06-00	1914	3	1552	305	11	11	22	0	6	0	2	2	0	0	
00-00	1969	5	1594	310	11	11	23	0	11	0	2	2	0	0	

Job Name/ Title			Site		Location		0		()						
17 January 2024			to		00/01/00		Direction		Eastbound						
TIME PERIOD	TOTAL VEHICLES	MOTOR-CYCLES	CARS OR CAR-BASED LGV	LIGHT GOODS VEHICLES	BUSES	TWO AXLE, SIX TYRE, RIGID	THREE AXLE RIGID	FOUR OR MORE AXLE RIGID	FOUR OR LESS AXLE ARTIC	FIVE AXLE ARTIC	SIX OR MORE AXLE ARTIC	FIVE OR LESS AXLE MULTI-TRAILER ARTIC	SIX AXLE MULTI-TRAILER ARTIC	SEVEN OR MORE AXLE ARTIC	
Virtual Day (2)															
0000	2	0	2	0	0	0	0	0	0	0	0	0	0	0	
0100	2	0	1	1	0	0	1	0	0	0	0	0	0	0	
0200	1	0	1	1	0	0	0	0	0	0	0	0	0	0	
0300	4	1	2	1	0	0	1	0	0	0	0	0	0	0	
0400	14	1	11	1	0	0	0	0	2	0	0	0	0	0	
0500	34	0	28	3	0	0	1	0	3	0	0	0	0	0	
0600	76	0	54	20	0	0	1	0	0	0	1	0	0	0	
0700	175	1	136	33	1	1	3	0	1	0	0	0	0	0	
0800	219	0	179	32	3	4	2	0	1	0	0	0	0	0	
0900	121	1	99	19	1	2	1	0	0	0	0	1	0	0	
1000	113	0	87	22	1	1	2	0	1	0	0	0	0	0	
1100	102	0	78	22	1	1	1	0	0	0	0	0	0	0	
1200	95	0	77	16	0	1	2	0	0	0	0	0	0	0	
1300	122	1	96	21	2	1	2	0	2	0	0	1	0	0	
1400	112	0	92	18	0	1	1	0	1	0	0	1	0	0	
1500	153	1	124	22	1	3	2	0	2	0	0	0	0	0	
1600	197	2	159	30	2	2	1	0	2	0	0	0	0	0	
1700	164	1	143	18	0	1	1	0	1	0	1	0	0	0	
1800	104	1	94	9	0	1	0	0	1	0	0	0	0	0	
1900	68	0	63	4	0	0	2	0	0	0	0	0	0	0	
2000	45	0	43	2	0	0	0	0	0	0	0	0	0	0	
2100	31	0	28	2	0	0	1	0	0	0	0	0	0	0	
2200	21	0	18	3	0	0	0	0	0	0	0	0	0	0	
2300	9	0	8	1	0	0	0	0	0	0	0	0	0	0	
07-19	1675	6	1361	260	10	14	15	0	9	0	1	2	0	0	
06-22	1893	6	1548	287	10	14	18	0	9	0	2	2	0	0	
06-00	1923	6	1574	291	10	14	18	0	9	0	2	2	0	0	
00-00	1978	8	1617	296	10	14	19	0	13	0	2	2	0	0	

Job Name/ Title: 17 January 2024 to 00/01/00
 Site: 0 Location: ()
 Direction: Eastbound

TIME PERIOD	TOTAL VEHICLES	MOTOR-CYCLES	CARS OR CAR-BASED LGV	LIGHT GOODS VEHICLES	BUSES	TWO AXLE, SIX TYRE, RIGID	THREE AXLE RIGID	FOUR OR MORE AXLE RIGID	FOUR OR LESS AXLE ARTIC	FIVE AXLE ARTIC	SIX OR MORE AXLE ARTIC	FIVE OR LESS AXLE MULTI-TRAILER ARTIC	SIX AXLE MULTI-TRAILER ARTIC	SEVEN OR MORE AXLE ARTIC
-------------	----------------	--------------	-----------------------	----------------------	-------	---------------------------	------------------	-------------------------	-------------------------	-----------------	------------------------	---------------------------------------	------------------------------	--------------------------

Virtual Week (Partial weeks =														
Mon	0	0	0	0	0	0	0	0	0	0	0	0	0	0
Tue	0	0	0	0	0	0	0	0	0	0	0	0	0	0
Wed	1987	10	1640	281	8	17	15	0	14	0	1	1	0	0
Thu	1969	5	1594	310	11	11	23	0	11	0	2	2	0	0
Fri	0	0	0	0	0	0	0	0	0	0	0	0	0	0
Sat	0	0	0	0	0	0	0	0	0	0	0	0	0	0
Sun	0	0	0	0	0	0	0	0	0	0	0	0	0	0
00:00	0	0	0	0	0	0	0	0	0	0	0	0	0	0
00:00	0	0	0	0	0	0	0	0	0	0	0	0	0	0
Grand Total	0	0	0	0	0	0	0	0	0	0	0	0	0	0
00:00	0	0	0	0	0	0	0	0	0	0	0	0	0	0
Time	Total	Cls	Cls	Cls	Cls	Cls	Cls	Cls	Cls	Cls	Cls	Cls	Cls	Cls
[--		1	2	3	4	5	6	7	8	9	10	11	12	13

--	3956	15	3234	591	19	28	38	0	25	0	3	3	0	0
00:00	0	0	0	0	0	0	0	0	0	0	0	0	0	0
00:00	0	0	0	0	0	0	0	0	0	0	0	0	0	0
00:00	0	0	0	0	0	0	0	0	0	0	0	0	0	0
00:00	0	0	0	0	0	0	0	0	0	0	0	0	0	0
00:00	0	0	0	0	0	0	0	0	0	0	0	0	0	0
00:00	0	0	0	0	0	0	0	0	0	0	0	0	0	0
00:00	0	0	0	0	0	0	0	0	0	0	0	0	0	0
00:00	0	0	0	0	0	0	0	0	0	0	0	0	0	0
00:00	0	0	0	0	0	0	0	0	0	0	0	0	0	0
00:00	0	0	0	0	0	0	0	0	0	0	0	0	0	0
00:00	0	0	0	0	0	0	0	0	0	0	0	0	0	0
00:00	0	0	0	0	0	0	0	0	0	0	0	0	0	0
00:00	0	0	0	0	0	0	0	0	0	0	0	0	0	0
00:00	0	0	0	0	0	0	0	0	0	0	0	0	0	0
00:00	0	0	0	0	0	0	0	0	0	0	0	0	0	0
00:00	0	0	0	0	0	0	0	0	0	0	0	0	0	0
00:00	0	0	0	0	0	0	0	0	0	0	0	0	0	0
00:00	0	0	0	0	0	0	0	0	0	0	0	0	0	0

Job Name/ Title 17 January 2024 to 00/01/00 Site 0 Location () Direction Eastbound

TIME PERIOD	TOTAL VEHICLES	MOTOR-CYCLES	CARS OR CAR-BASED LGV	LIGHT GOODS VEHICLES	BUSES	TWO AXLE, SIX TYRE, RIGID	THREE AXLE RIGID	FOUR OR MORE AXLE RIGID	FOUR OR LESS AXLE ARTIC	FIVE AXLE ARTIC	SIX OR MORE AXLE ARTIC	FIVE OR LESS AXLE MULTI-TRAILER ARTIC	SIX AXLE MULTI-TRAILER ARTIC	SEVEN OR MORE AXLE ARTIC
-------------	----------------	--------------	-----------------------	----------------------	-------	---------------------------	------------------	-------------------------	-------------------------	-----------------	------------------------	---------------------------------------	------------------------------	--------------------------

Saturday, 0 January 1900

00:00	0	0	0	0	0	0	0	0	0	0	0	0	0	0
00:00	0	0	0	0	0	0	0	0	0	0	0	0	0	0
00:00	0	0	0	0	0	0	0	0	0	0	0	0	0	0
00:00	0	0	0	0	0	0	0	0	0	0	0	0	0	0
00:00	0	0	0	0	0	0	0	0	0	0	0	0	0	0
00:00	0	0	0	0	0	0	0	0	0	0	0	0	0	0
00:00	0	0	0	0	0	0	0	0	0	0	0	0	0	0
00:00	0	0	0	0	0	0	0	0	0	0	0	0	0	0
00:00	0	0	0	0	0	0	0	0	0	0	0	0	0	0
00:00	0	0	0	0	0	0	0	0	0	0	0	0	0	0
00:00	0	0	0	0	0	0	0	0	0	0	0	0	0	0
00:00	0	0	0	0	0	0	0	0	0	0	0	0	0	0
00:00	0	0	0	0	0	0	0	0	0	0	0	0	0	0
00:00	0	0	0	0	0	0	0	0	0	0	0	0	0	0
00:00	0	0	0	0	0	0	0	0	0	0	0	0	0	0
00:00	0	0	0	0	0	0	0	0	0	0	0	0	0	0
00:00	0	0	0	0	0	0	0	0	0	0	0	0	0	0
00:00	0	0	0	0	0	0	0	0	0	0	0	0	0	0
00:00	0	0	0	0	0	0	0	0	0	0	0	0	0	0
00:00	0	0	0	0	0	0	0	0	0	0	0	0	0	0
00:00	0	0	0	0	0	0	0	0	0	0	0	0	0	0

0	0	0	0	0	0	0	0	0	0	0	0	0	0	0
0	0	0	0	0	0	0	0	0	0	0	0	0	0	0
0	0	0	0	0	0	0	0	0	0	0	0	0	0	0
0	0	0	0	0	0	0	0	0	0	0	0	0	0	0

Job Name/ Title				Site		Location		Direction							
17 January 2024 to 00/01/00				0		()		Eastbound							
TIME PERIOD	TOTAL VEHICLES	MOTOR-CYCLES	CARS OR CAR-BASED LGV	LIGHT GOODS VEHICLES	BUSES	TWO AXLE, SIX TYRE, RIGID	THREE AXLE RIGID	FOUR OR MORE AXLE RIGID	FOUR OR LESS AXLE ARTIC	FIVE AXLE ARTIC	SIX OR MORE AXLE ARTIC	FIVE OR LESS AXLE MULTI-TRAILER ARTIC	SIX AXLE MULTI-TRAILER ARTIC	SEVEN OR MORE AXLE ARTIC	

Saturday, 0 January 1900														
00:00	0	0	0	0	0	0	0	0	0	0	0	0	0	0
00:00	0	0	0	0	0	0	0	0	0	0	0	0	0	0
00:00	0	0	0	0	0	0	0	0	0	0	0	0	0	0
00:00	0	0	0	0	0	0	0	0	0	0	0	0	0	0
00:00	0	0	0	0	0	0	0	0	0	0	0	0	0	0
00:00	0	0	0	0	0	0	0	0	0	0	0	0	0	0
00:00	0	0	0	0	0	0	0	0	0	0	0	0	0	0
00:00	0	0	0	0	0	0	0	0	0	0	0	0	0	0
00:00	0	0	0	0	0	0	0	0	0	0	0	0	0	0
00:00	0	0	0	0	0	0	0	0	0	0	0	0	0	0
00:00	0	0	0	0	0	0	0	0	0	0	0	0	0	0
00:00	0	0	0	0	0	0	0	0	0	0	0	0	0	0
00:00	0	0	0	0	0	0	0	0	0	0	0	0	0	0
00:00	0	0	0	0	0	0	0	0	0	0	0	0	0	0
00:00	0	0	0	0	0	0	0	0	0	0	0	0	0	0
00:00	0	0	0	0	0	0	0	0	0	0	0	0	0	0
00:00	0	0	0	0	0	0	0	0	0	0	0	0	0	0
00:00	0	0	0	0	0	0	0	0	0	0	0	0	0	0
00:00	0	0	0	0	0	0	0	0	0	0	0	0	0	0
00:00	0	0	0	0	0	0	0	0	0	0	0	0	0	0
00:00	0	0	0	0	0	0	0	0	0	0	0	0	0	0
0	0	0	0	0	0	0	0	0	0	0	0	0	0	0
0	0	0	0	0	0	0	0	0	0	0	0	0	0	0
0	0	0	0	0	0	0	0	0	0	0	0	0	0	0
0	0	0	0	0	0	0	0	0	0	0	0	0	0	0

Job Name/ Title 17 January 2024 to 00/01/00 Site 0 Location () Direction Eastbound

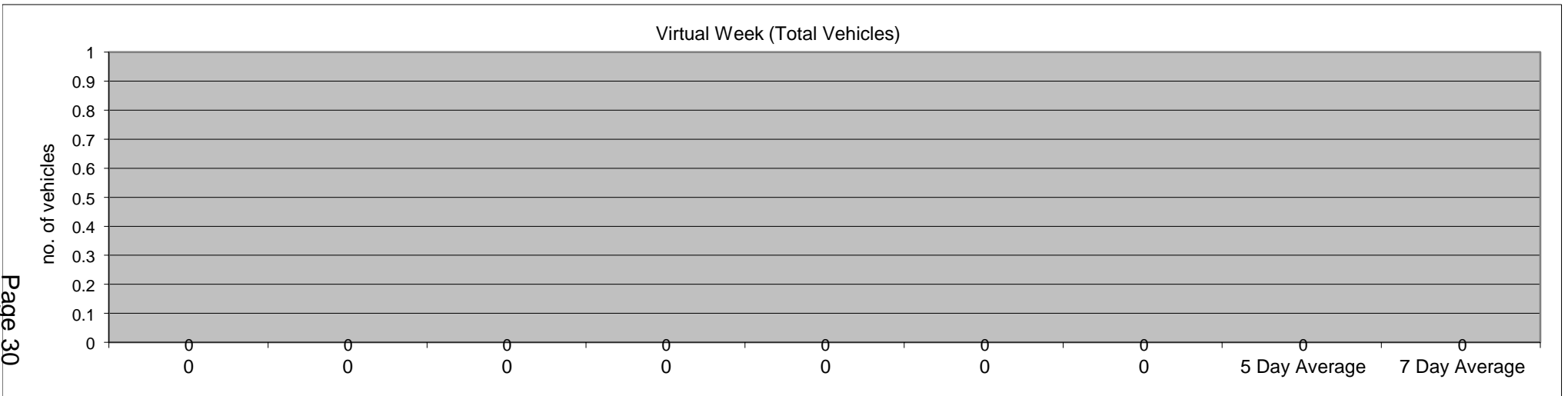
TIME PERIOD	TOTAL VEHICLES	MOTOR-CYCLES	CARS OR CAR-BASED LGV	LIGHT GOODS VEHICLES	BUSES	TWO AXLE, SIX TYRE, RIGID	THREE AXLE RIGID	FOUR OR MORE AXLE RIGID	FOUR OR LESS AXLE ARTIC	FIVE AXLE ARTIC	SIX OR MORE AXLE ARTIC	FIVE OR LESS AXLE MULTI-TRAILER ARTIC	SIX AXLE MULTI-TRAILER ARTIC	SEVEN OR MORE AXLE ARTIC
-------------	----------------	--------------	-----------------------	----------------------	-------	---------------------------	------------------	-------------------------	-------------------------	-----------------	------------------------	---------------------------------------	------------------------------	--------------------------

Average Day

00:00	0	0	0	0	0	0	0	0	0	0	0	0	0	0
00:00	0	0	0	0	0	0	0	0	0	0	0	0	0	0
00:00	0	0	0	0	0	0	0	0	0	0	0	0	0	0
00:00	0	0	0	0	0	0	0	0	0	0	0	0	0	0
00:00	0	0	0	0	0	0	0	0	0	0	0	0	0	0
00:00	0	0	0	0	0	0	0	0	0	0	0	0	0	0
00:00	0	0	0	0	0	0	0	0	0	0	0	0	0	0
00:00	0	0	0	0	0	0	0	0	0	0	0	0	0	0
00:00	0	0	0	0	0	0	0	0	0	0	0	0	0	0
00:00	0	0	0	0	0	0	0	0	0	0	0	0	0	0
00:00	0	0	0	0	0	0	0	0	0	0	0	0	0	0
00:00	0	0	0	0	0	0	0	0	0	0	0	0	0	0
00:00	0	0	0	0	0	0	0	0	0	0	0	0	0	0
00:00	0	0	0	0	0	0	0	0	0	0	0	0	0	0
00:00	0	0	0	0	0	0	0	0	0	0	0	0	0	0
00:00	0	0	0	0	0	0	0	0	0	0	0	0	0	0
00:00	0	0	0	0	0	0	0	0	0	0	0	0	0	0
00:00	0	0	0	0	0	0	0	0	0	0	0	0	0	0
00:00	0	0	0	0	0	0	0	0	0	0	0	0	0	0
00:00	0	0	0	0	0	0	0	0	0	0	0	0	0	0
00:00	0	0	0	0	0	0	0	0	0	0	0	0	0	0
00:00	0	0	0	0	0	0	0	0	0	0	0	0	0	0

0	0	0	0	0	0	0	0	0	0	0	0	0	0	0
0	0	0	0	0	0	0	0	0	0	0	0	0	0	0
0	0	0	0	0	0	0	0	0	0	0	0	0	0	0
0	0	0	0	0	0	0	0	0	0	0	0	0	0	0

Job Name/ Title		Site	0	Location	()										
17 January 2024		to	00/01/00	Direction	Eastbound										
TIME PERIOD	TOTAL VEHICLES	MOTOR-CYCLES	CARS OR CAR-BASED LGV	LIGHT GOODS VEHICLES	BUSES	TWO AXLE, SIX TYRE, RIGID	THREE AXLE RIGID	FOUR OR MORE AXLE RIGID	FOUR OR LESS AXLE ARTIC	FIVE AXLE ARTIC	SIX OR MORE AXLE ARTIC	FIVE OR LESS AXLE MULTI-TRAILER ARTIC	SIX AXLE MULTI-TRAILER ARTIC	SEVEN OR MORE AXLE ARTIC	
Virtual Week															
0	0	0	0	0	0	0	0	0	0	0	0	0	0	0	
0	0	0	0	0	0	0	0	0	0	0	0	0	0	0	
0	0	0	0	0	0	0	0	0	0	0	0	0	0	0	
0	0	0	0	0	0	0	0	0	0	0	0	0	0	0	
0	0	0	0	0	0	0	0	0	0	0	0	0	0	0	
0	0	0	0	0	0	0	0	0	0	0	0	0	0	0	
0	0	0	0	0	0	0	0	0	0	0	0	0	0	0	
5 Day Average															
[--]	0	0	0	0	0	0	0	0	0	0	0	0	0	0	
7 Day Average															
[--]	0	0	0	0	0	0	0	0	0	0	0	0	0	0	
Total Vehicles															
[--]	0	0	0	0	0	0	0	0	0	0	0	0	0	0	



Job Name/ Title										Site	0	Location ()											
17 January 2024										Direction	Eastbound	Speed Limit (PSL)					ACPO (SL1)		DfT (SL2)				
Time Period	Total Vehicles	0	5	10	15	20	25	30	35	40	45	50	55	60	130	20	20	24	24	35	35	Mean Speed	85%ile Speed
		5	10	15	20	25	30	35	40	45	50	55	60	130			ACPO	ACPO	DFT	DFT			
17 January 2024																							
0000	1	0	0	0	0	0	0	1	0	0	0	0	0	0	1	100	1	100	0	0	34.5	-	
0100	2	0	0	0	0	1	0	0	1	0	0	0	0	0	2	100	1	50	1	50	30	-	
0200	0	0	0	0	0	0	0	0	0	0	0	0	0	0	0	0	0	0	0	0	-	-	
0300	3	0	0	0	0	0	1	1	0	0	0	1	0	0	3	100	3	100	1	33.33	37.5	-	
0400	15	0	0	0	0	0	0	4	3	5	2	1	0	0	15	100	15	100	11	73.33	40	48.2	
0500	35	0	0	0	0	0	6	6	5	6	8	3	1	0	35	100	35	100	23	65.71	39.9	47.6	
0600	75	0	1	0	1	10	5	20	16	15	6	0	1	0	73	97.33	66	88	38	50.67	35.1	43.4	
0700	179	0	2	2	3	33	56	42	29	8	4	0	0	0	172	96.09	141	78.77	41	22.91	29.8	37	
0800	218	0	1	0	9	41	63	63	30	8	3	0	0	0	208	95.41	176	80.73	41	18.81	29.7	36.4	
0900	117	0	1	0	8	38	31	21	12	4	0	2	0	0	108	92.31	71	60.68	18	15.38	27.5	35.2	
1000	118	0	0	1	9	33	37	26	7	4	1	0	0	0	108	91.53	81	68.64	12	10.17	27.5	33.8	
1100	105	0	0	0	10	42	27	13	9	2	2	0	0	0	95	90.48	62	59.05	13	12.38	26.9	33.7	
1200	89	0	0	0	2	25	32	17	7	4	2	0	0	0	87	97.75	67	75.28	13	14.61	28.6	34.6	
1300	123	0	2	0	5	37	30	27	15	5	2	0	0	0	116	94.31	88	71.54	22	17.89	28.5	36.1	
1400	102	0	0	0	4	23	28	28	12	7	0	0	0	0	98	96.08	78	76.47	19	18.63	29.7	36.4	
1500	146	0	1	0	7	31	50	34	14	7	2	0	0	0	138	94.52	116	79.45	23	15.75	29	35.3	
1600	196	0	5	3	17	61	48	34	20	5	2	0	0	1	171	87.24	118	60.2	28	14.29	27.1	34.9	
1700	189	0	1	1	9	39	56	48	25	9	1	0	0	0	178	94.18	148	78.31	35	18.52	29.2	36.9	
1800	102	0	0	0	7	13	19	37	16	8	0	1	1	0	95	93.14	85	83.33	26	25.49	31.2	37.5	
1900	70	0	0	1	3	12	14	18	16	4	2	0	0	0	66	94.29	58	82.86	22	31.43	31.2	38.9	
2000	48	0	0	0	4	7	11	7	6	7	5	0	0	1	44	91.67	39	81.25	19	39.58	32.8	43.6	
2100	27	0	0	0	0	1	9	5	6	5	1	0	0	0	27	100	26	96.3	12	44.44	34.2	41.3	
2200	18	0	0	1	1	4	4	4	1	1	2	0	0	0	16	88.89	14	77.78	4	22.22	30	42.3	
2300	9	0	0	0	1	1	1	1	1	3	1	0	0	0	8	88.89	7	77.78	5	55.56	33.8	-	
07-19	1684	0	13	7	90	416	477	390	196	71	19	3	1	1	1574	93.47	1231	73.1	291	17.28	28.7	35.7	
06-22	1904	0	14	8	98	446	516	440	240	102	33	3	2	2	1784	93.7	1420	74.58	382	20.06	29.3	36.7	
05-00	1931	0	14	9	100	451	521	445	242	106	36	3	2	2	1808	93.63	1441	74.62	391	20.25	29.3	36.7	
00-00	1987	0	14	9	100	452	528	457	251	117	46	8	3	2	1864	93.81	1496	75.29	427	21.49	29.6	37.2	

Job Name/ Title										Site	0	Location				Speed Limit		ACPO (SL1)		DfT (SL2)		Mean	85%ile
17 January 2024										Direction	Eastbound					20	20	24	24	35	35	Speed	Speed
Time	Total	Speed Bins													Speed Limit (PSL)		ACPO (SL1)		DfT (SL2)		Mean	85%ile	
Period	Vehicles	0	5	10	15	20	25	30	35	40	45	50	55	60	130	20	20	24	24	35	35	Mean	85%ile
		5	10	15	20	25	30	35	40	45	50	55	60	130			ACPO	ACPO	DFT	DFT	Speed	Speed	
18 January 2024																							
0000	2	0	0	0	0	0	0	0	1	0	0	1	0	0	2	100	2	100	2	100	44.3	-	
0100	2	0	0	0	0	0	1	0	1	0	0	0	0	0	2	100	2	100	1	50	33.2	-	
0200	2	0	0	0	0	0	0	0	1	1	0	0	0	0	2	100	2	100	2	100	38.5	-	
0300	4	0	0	0	0	0	1	0	0	2	0	1	0	0	4	100	4	100	3	75	41.8	-	
0400	13	0	0	0	0	0	2	2	3	2	2	1	1	0	13	100	13	100	9	69.23	40.1	51.2	
0500	32	0	0	0	1	0	1	5	7	8	8	2	0	0	31	96.88	31	96.88	25	78.13	40.7	48.4	
0600	76	0	0	0	3	5	10	26	22	6	4	0	0	0	73	96.05	71	93.42	32	42.11	33.6	39.9	
0700	171	0	2	1	10	35	47	47	16	8	3	2	0	0	158	92.4	133	77.78	29	16.96	29	35.7	
0800	220	0	0	0	14	47	75	54	23	2	2	3	0	0	206	93.64	169	76.82	30	13.64	28.7	34.4	
0900	125	0	0	1	10	29	34	26	16	3	5	1	0	0	114	91.2	89	71.2	25	20	29	36.4	
1000	107	0	1	1	0	23	35	27	17	2	1	0	0	0	105	98.13	88	82.24	20	18.69	29.4	35.7	
1100	98	0	0	0	2	23	34	16	15	1	6	1	0	0	96	97.96	83	84.69	23	23.47	30.4	37.3	
1200	100	0	0	0	7	23	28	28	12	1	1	0	0	0	93	93	73	73	14	14	28.5	34.8	
1300	121	0	0	1	9	17	33	33	15	8	4	1	0	0	111	91.74	95	78.51	28	23.14	30.5	38.1	
1400	122	0	0	1	1	31	37	22	20	8	1	1	0	0	120	98.36	99	81.15	30	24.59	30	37.9	
1500	159	0	1	3	4	36	46	38	19	8	4	0	0	0	151	94.97	120	75.47	31	19.5	29.3	36.8	
1600	197	0	5	2	10	36	58	53	27	5	0	1	0	0	180	91.37	155	78.68	33	16.75	28.7	35.6	
1700	139	0	1	1	2	26	43	34	19	10	1	2	0	0	135	97.12	117	84.17	32	23.02	30.5	36.1	
1800	106	0	0	1	0	19	27	36	12	5	4	1	0	1	105	99.06	93	87.74	23	21.7	31.3	37.9	
1900	65	0	0	0	6	16	16	9	12	3	2	0	1	0	59	90.77	47	72.31	18	27.69	29.7	39.4	
2000	42	0	0	0	4	9	5	14	7	3	0	0	0	0	38	90.48	31	73.81	10	23.81	30.2	37.7	
2100	34	0	0	0	1	3	7	9	8	4	2	0	0	0	33	97.06	30	88.24	14	41.18	33.1	40.4	
2200	23	0	0	0	0	3	5	8	3	1	0	3	0	0	23	100	20	86.96	7	30.43	34	44.9	
2300	9	0	0	0	0	1	2	2	1	3	0	0	0	0	9	100	8	88.89	4	44.44	34.3	-	
07-19	1665	0	10	12	69	345	497	414	211	61	32	13	0	1	1574	94.53	1314	78.92	318	19.1	29.5	36	
06-22	1882	0	10	12	83	378	535	472	260	77	40	13	1	1	1777	94.42	1493	79.33	392	20.83	29.7	36.5	
05-00	1914	0	10	12	83	382	542	482	264	81	40	16	1	1	1809	94.51	1521	79.47	403	21.06	29.8	36.6	
00-00	1969	0	10	12	84	382	547	489	277	94	50	21	2	1	1863	94.62	1575	79.99	445	22.6	30.1	37	

Job Name/ Title										Site	0	Location ()											
17 January 2024										Direction	Eastbound	Speed Limit (PSL)					ACPO (SL1)		DfT (SL2)				
Time Period	Total Vehicles	0	5	10	15	20	25	30	35	40	45	50	55	60	130	20	20	24	24	35	35	Mean Speed	85%ile Speed
		5	10	15	20	25	30	35	40	45	50	55	60	130			ACPO	ACPO	DFT	DFT			
Virtual Day (2)																							
0000	2	0	0	0	0	0	0	1	1	0	0	1	0	0	2	100	2	100	1	66.67	41	-	
0100	2	0	0	0	0	1	1	0	1	0	0	0	0	0	2	100	2	75	1	50	31.6	-	
0200	1	0	0	0	0	0	0	0	1	1	0	0	0	0	1	100	1	100	1	100	38.5	-	
0300	4	0	0	0	0	0	1	1	0	1	0	1	0	0	4	100	4	100	2	57.14	40	-	
0400	14	0	0	0	0	0	1	3	3	4	2	1	1	0	14	100	14	100	10	71.43	40.1	48.8	
0500	34	0	0	0	1	0	4	6	6	7	8	3	1	0	33	98.51	33	98.51	24	71.64	40.3	47.7	
0600	76	0	1	0	2	8	8	23	19	11	5	0	1	0	73	96.69	69	90.73	35	46.36	34.4	41.8	
0700	175	0	2	2	7	34	52	45	23	8	4	1	0	0	165	94.29	137	78.29	35	20	29.4	36.3	
0800	219	0	1	0	12	44	69	59	27	5	3	2	0	0	207	94.52	173	78.77	36	16.21	29.2	35.4	
0900	121	0	1	1	9	34	33	24	14	4	3	2	0	0	111	91.74	80	66.12	22	17.77	28.3	35.7	
1000	113	0	1	1	5	28	36	27	12	3	1	0	0	0	107	94.67	85	75.11	16	14.22	28.4	34.8	
1100	102	0	0	0	6	33	31	15	12	2	4	1	0	0	96	94.09	73	71.43	18	17.73	28.6	36.3	
1200	95	0	0	0	5	24	30	23	10	3	2	0	0	0	90	95.24	70	74.07	14	14.29	28.6	34.7	
1300	122	0	1	1	7	27	32	30	15	7	3	1	0	0	114	93.03	92	75	25	20.49	29.5	37	
1400	112	0	0	1	3	27	33	25	16	8	1	1	0	0	109	97.32	89	79.02	25	21.88	29.8	37.2	
1500	153	0	1	2	6	34	48	36	17	8	3	0	0	0	145	94.75	118	77.38	27	17.7	29.1	35.8	
1600	197	0	5	3	14	49	53	44	24	5	1	1	0	1	176	89.31	137	69.47	31	15.52	27.9	35.2	
1700	164	0	1	1	6	33	50	41	22	10	1	1	0	0	157	95.43	133	80.79	34	20.43	29.8	36.6	
1800	104	0	0	1	4	16	23	37	14	7	2	1	1	1	100	96.15	89	85.58	25	23.56	31.2	37.5	
1900	68	0	0	1	5	14	15	14	14	4	2	0	1	0	63	92.59	53	77.78	20	29.63	30.5	38.9	
2000	45	0	0	0	4	8	8	11	7	5	3	0	0	1	41	91.11	35	77.78	15	32.22	31.6	41.4	
2100	31	0	0	0	1	2	8	7	7	5	2	0	0	0	30	98.36	28	91.8	13	42.62	33.6	40.8	
2200	21	0	0	1	1	4	5	6	2	1	1	2	0	0	20	95.12	17	82.93	6	26.83	32.3	41.3	
2300	9	0	0	0	1	1	2	2	1	3	1	0	0	0	9	94.44	8	83.33	5	50	34	-	
07-19	1675	0	12	10	80	381	487	402	204	66	26	8	1	1	1574	94	1273	75.99	305	18.18	29.1	35.9	
06-22	1893	0	12	10	91	412	526	456	250	90	37	8	2	2	1781	94.06	1457	76.94	387	20.44	29.5	36.5	
00-00	1923	0	12	11	92	417	532	464	253	94	38	10	2	2	1809	94.07	1481	77.04	397	20.65	29.6	36.6	
00-00	1978	0	12	11	92	417	538	473	264	106	48	15	3	2	1864	94.21	1536	77.63	436	22.04	29.8	37	

Job Name/ Title													Site	0	Location									
17 January 2024					to		00/01/00		Direction		Eastbound				Speed Limit (PSL)		ACPO (SL1)		DfT (SL2)					
Time Period	Total Vehicles	Speed Bins										Speed Limit (PSL)		ACPO (SL1)		DfT (SL2)		Mean Speed	85%ile Speed					
		0-5	5-10	10-15	15-20	20-25	25-30	30-35	35-40	40-45	45-50	50-55	55-60	60-130	20	20	24			24	35	35		
Saturday, 0 January 1900																								
00:00	0	0	0	0	0	0	0	0	0	0	0	0	0	0	0	0	0	0	0	0	0	0		
00:00	0	0	0	0	0	0	0	0	0	0	0	0	0	0	0	0	0	0	0	0	0	0		
00:00	0	0	0	0	0	0	0	0	0	0	0	0	0	0	0	0	0	0	0	0	0	0		
00:00	0	0	0	0	0	0	0	0	0	0	0	0	0	0	0	0	0	0	0	0	0	0		
00:00	0	0	0	0	0	0	0	0	0	0	0	0	0	0	0	0	0	0	0	0	0	0		
00:00	0	0	0	0	0	0	0	0	0	0	0	0	0	0	0	0	0	0	0	0	0	0		
00:00	0	0	0	0	0	0	0	0	0	0	0	0	0	0	0	0	0	0	0	0	0	0		
00:00	0	0	0	0	0	0	0	0	0	0	0	0	0	0	0	0	0	0	0	0	0	0		
00:00	0	0	0	0	0	0	0	0	0	0	0	0	0	0	0	0	0	0	0	0	0	0		
00:00	0	0	0	0	0	0	0	0	0	0	0	0	0	0	0	0	0	0	0	0	0	0		
00:00	0	0	0	0	0	0	0	0	0	0	0	0	0	0	0	0	0	0	0	0	0	0		
00:00	0	0	0	0	0	0	0	0	0	0	0	0	0	0	0	0	0	0	0	0	0	0		
00:00	0	0	0	0	0	0	0	0	0	0	0	0	0	0	0	0	0	0	0	0	0	0		
00:00	0	0	0	0	0	0	0	0	0	0	0	0	0	0	0	0	0	0	0	0	0	0		
00:00	0	0	0	0	0	0	0	0	0	0	0	0	0	0	0	0	0	0	0	0	0	0		
00:00	0	0	0	0	0	0	0	0	0	0	0	0	0	0	0	0	0	0	0	0	0	0		
00:00	0	0	0	0	0	0	0	0	0	0	0	0	0	0	0	0	0	0	0	0	0	0		
00:00	0	0	0	0	0	0	0	0	0	0	0	0	0	0	0	0	0	0	0	0	0	0		
00:00	0	0	0	0	0	0	0	0	0	0	0	0	0	0	0	0	0	0	0	0	0	0		
00:00	0	0	0	0	0	0	0	0	0	0	0	0	0	0	0	0	0	0	0	0	0	0		
00:00	0	0	0	0	0	0	0	0	0	0	0	0	0	0	0	0	0	0	0	0	0	0		
00:00	0	0	0	0	0	0	0	0	0	0	0	0	0	0	0	0	0	0	0	0	0	0		
00:00	0	0	0	0	0	0	0	0	0	0	0	0	0	0	0	0	0	0	0	0	0	0		
00:00	0	0	0	0	0	0	0	0	0	0	0	0	0	0	0	0	0	0	0	0	0	0		
00:00	0	0	0	0	0	0	0	0	0	0	0	0	0	0	0	0	0	0	0	0	0	0		
00:00	0	0	0	0	0	0	0	0	0	0	0	0	0	0	0	0	0	0	0	0	0	0		
00:00	0	0	0	0	0	0	0	0	0	0	0	0	0	0	0	0	0	0	0	0	0	0		
00:00	0	0	0	0	0	0	0	0	0	0	0	0	0	0	0	0	0	0	0	0	0	0		
00:00	0	0	0	0	0	0	0	0	0	0	0	0	0	0	0	0	0	0	0	0	0	0		
00:00	0	0	0	0	0	0	0	0	0	0	0	0	0	0	0	0	0	0	0	0	0	0		
00:00	0	0	0	0	0	0	0	0	0	0	0	0	0	0	0	0	0	0	0	0	0	0		
00:00	0	0	0	0	0	0	0	0	0	0	0	0	0	0	0	0	0	0	0	0	0	0		
00:00	0	0	0	0	0	0	0	0	0	0	0	0	0	0	0	0	0	0	0	0	0	0		

Job Name/ Title		Site 0 Location ()													Speed Limit (PSL)		ACPO (SL1)		DfT (SL2)		Mean Speed	85%ile Speed
17 January 2024		to 00/01/00													Direction Eastbound							
		0	5	10	15	20	25	30	35	40	45	50	55	60	20	20	24	24	35	35		
Time Period	Total Vehicles	5	10	15	20	25	30	35	40	45	50	55	60	130			ACPO	ACPO	DFT	DFT	Speed	Speed
Saturday, 0 January 1900																						
00:00	0	0	0	0	0	0	0	0	0	0	0	0	0	0	0	0	0	0	0	0	0	
00:00	0	0	0	0	0	0	0	0	0	0	0	0	0	0	0	0	0	0	0	0	0	
00:00	0	0	0	0	0	0	0	0	0	0	0	0	0	0	0	0	0	0	0	0	0	
00:00	0	0	0	0	0	0	0	0	0	0	0	0	0	0	0	0	0	0	0	0	0	
00:00	0	0	0	0	0	0	0	0	0	0	0	0	0	0	0	0	0	0	0	0	0	
00:00	0	0	0	0	0	0	0	0	0	0	0	0	0	0	0	0	0	0	0	0	0	
00:00	0	0	0	0	0	0	0	0	0	0	0	0	0	0	0	0	0	0	0	0	0	
00:00	0	0	0	0	0	0	0	0	0	0	0	0	0	0	0	0	0	0	0	0	0	
00:00	0	0	0	0	0	0	0	0	0	0	0	0	0	0	0	0	0	0	0	0	0	
00:00	0	0	0	0	0	0	0	0	0	0	0	0	0	0	0	0	0	0	0	0	0	
00:00	0	0	0	0	0	0	0	0	0	0	0	0	0	0	0	0	0	0	0	0	0	
00:00	0	0	0	0	0	0	0	0	0	0	0	0	0	0	0	0	0	0	0	0	0	
00:00	0	0	0	0	0	0	0	0	0	0	0	0	0	0	0	0	0	0	0	0	0	
00:00	0	0	0	0	0	0	0	0	0	0	0	0	0	0	0	0	0	0	0	0	0	
00:00	0	0	0	0	0	0	0	0	0	0	0	0	0	0	0	0	0	0	0	0	0	
00:00	0	0	0	0	0	0	0	0	0	0	0	0	0	0	0	0	0	0	0	0	0	
00:00	0	0	0	0	0	0	0	0	0	0	0	0	0	0	0	0	0	0	0	0	0	
00:00	0	0	0	0	0	0	0	0	0	0	0	0	0	0	0	0	0	0	0	0	0	
00:00	0	0	0	0	0	0	0	0	0	0	0	0	0	0	0	0	0	0	0	0	0	
00:00	0	0	0	0	0	0	0	0	0	0	0	0	0	0	0	0	0	0	0	0	0	
00:00	0	0	0	0	0	0	0	0	0	0	0	0	0	0	0	0	0	0	0	0	0	
00:00	0	0	0	0	0	0	0	0	0	0	0	0	0	0	0	0	0	0	0	0	0	
00:00	0	0	0	0	0	0	0	0	0	0	0	0	0	0	0	0	0	0	0	0	0	
00:00	0	0	0	0	0	0	0	0	0	0	0	0	0	0	0	0	0	0	0	0	0	
00:00	0	0	0	0	0	0	0	0	0	0	0	0	0	0	0	0	0	0	0	0	0	
00:00	0	0	0	0	0	0	0	0	0	0	0	0	0	0	0	0	0	0	0	0	0	
00:00	0	0	0	0	0	0	0	0	0	0	0	0	0	0	0	0	0	0	0	0	0	
00:00	0	0	0	0	0	0	0	0	0	0	0	0	0	0	0	0	0	0	0	0	0	
00:00	0	0	0	0	0	0	0	0	0	0	0	0	0	0	0	0	0	0	0	0	0	
00:00	0	0	0	0	0	0	0	0	0	0	0	0	0	0	0	0	0	0	0	0	0	
00:00	0	0	0	0	0	0	0	0	0	0	0	0	0	0	0	0	0	0	0	0	0	
00:00	0	0	0	0	0	0	0	0	0	0	0	0	0	0	0	0	0	0	0	0	0	
00:00	0	0	0	0	0	0	0	0	0	0	0	0	0	0	0	0	0	0	0	0	0	
00:00	0	0	0	0	0	0	0	0	0	0	0	0	0	0	0	0	0	0	0	0	0	
00:00	0	0	0	0	0	0	0	0	0	0	0	0	0	0	0	0	0	0	0	0	0	

Page 37

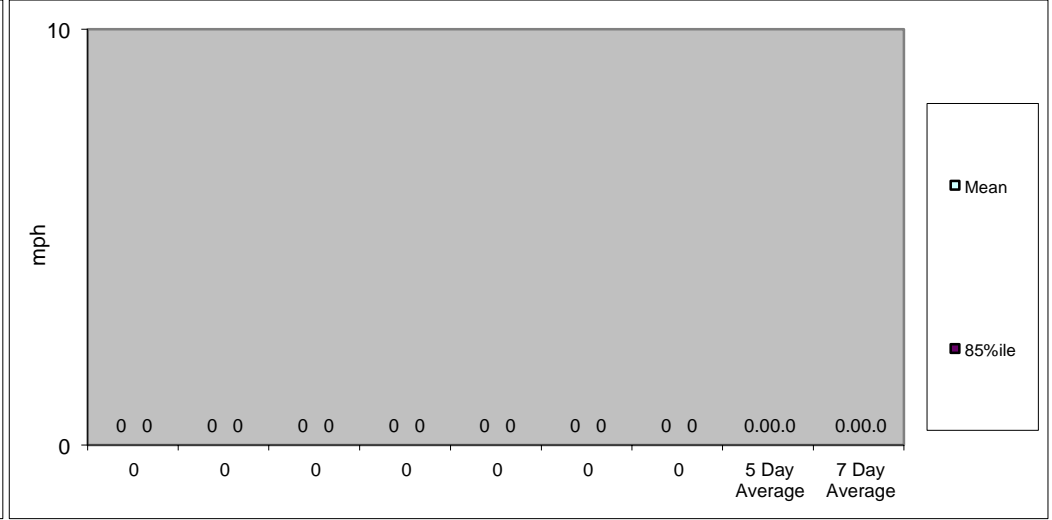
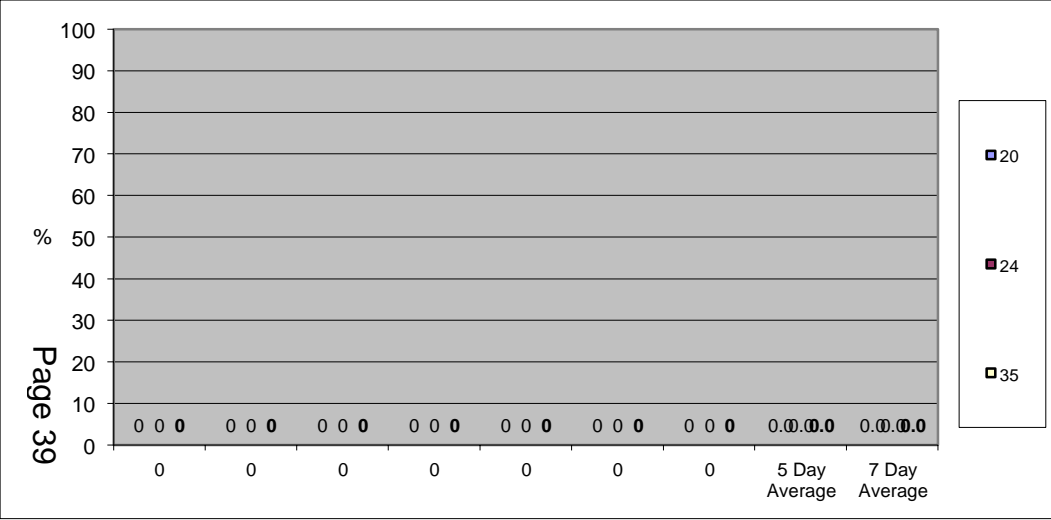
Job Name/ Title														Site		Location		Speed Limit		ACPO (SL1)		DfT (SL2)		Mean	85%ile
17 January 2024														0		()		20		24		35			
to														00/01/00		Direction		Eastbound							
Speed Bins														PSL						Speed	Speed				
Time Period	Total Vehicles	0	5	10	15	20	25	30	35	40	45	50	55	60	20	20	24	24	35	35	Mean	85%ile			
		5	10	15	20	25	30	35	40	45	50	55	60	130			ACPO	ACPO	DFT	DFT	Speed	Speed			

Virtual Week																					
0	0	0	0	0	0	0	0	0	0	0	0	0	0	0	0	0	0	0	0	0	0
0	0	0	0	0	0	0	0	0	0	0	0	0	0	0	0	0	0	0	0	0	0
0	0	0	0	0	0	0	0	0	0	0	0	0	0	0	0	0	0	0	0	0	0
0	0	0	0	0	0	0	0	0	0	0	0	0	0	0	0	0	0	0	0	0	0
0	0	0	0	0	0	0	0	0	0	0	0	0	0	0	0	0	0	0	0	0	0
0	0	0	0	0	0	0	0	0	0	0	0	0	0	0	0	0	0	0	0	0	0
0	0	0	0	0	0	0	0	0	0	0	0	0	0	0	0	0	0	0	0	0	0

5 Day Average																						
[--]	0	0	0	0	0	0	0	0	0	0	0	0	0	0	0	#DIV/0!	0	#DIV/0!	0	#DIV/0!	0.0	0.0

7 Day Average																						
[--]	0	0	0	0	0	0	0	0	0	0	0	0	0	0	0	#DIV/0!	0	#DIV/0!	0	#DIV/0!	0.0	0.0

Total Vehicles																						
[--]	0	0	0	0	0	0	0	0	0	0	0	0	0	0	0	0	0	0	0	0	0	0



Job Name/ Title		Site	0	Location											
17 January 2024		to	00/01/00	Direction	Westbound										
TIME PERIOD	TOTAL VEHICLES	MOTOR-CYCLES	CARS OR CAR-BASED LGV	LIGHT GOODS VEHICLES	BUSES	TWO AXLE, SIX TYRE, RIGID	THREE AXLE RIGID	FOUR OR MORE AXLE RIGID	FOUR OR LESS AXLE ARTIC	FIVE AXLE ARTIC	SIX OR MORE AXLE ARTIC	FIVE OR LESS AXLE MULTI-TRAILER ARTIC	SIX AXLE MULTI-TRAILER ARTIC	SEVEN OR MORE AXLE ARTIC	
17 January 2024															
0000	3	0	3	0	0	0	0	0	0	0	0	0	0	0	
0100	3	0	3	0	0	0	0	0	0	0	0	0	0	0	
0200	4	0	2	1	0	1	0	0	0	0	0	0	0	0	
0300	0	0	0	0	0	0	0	0	0	0	0	0	0	0	
0400	6	0	6	0	0	0	0	0	0	0	0	0	0	0	
0500	9	0	6	3	0	0	0	0	0	0	0	0	0	0	
0600	29	0	24	4	0	1	0	0	0	0	0	0	0	0	
0700	112	1	85	19	2	2	2	0	1	0	0	0	0	0	
0800	165	1	141	18	1	1	1	0	2	0	0	0	0	0	
0900	121	1	92	23	1	2	1	0	1	0	0	0	0	0	
1000	95	0	84	10	0	0	0	0	1	0	0	0	0	0	
1100	84	0	65	18	0	0	0	0	0	0	1	0	0	0	
1200	102	1	83	14	0	1	3	0	0	0	0	0	0	0	
1300	121	1	103	13	1	1	0	0	0	0	1	1	0	0	
1400	124	0	113	9	0	1	0	0	1	0	0	0	0	0	
1500	178	0	148	26	0	3	1	0	0	0	0	0	0	0	
1600	236	0	203	29	2	0	1	0	1	0	0	0	0	0	
1700	244	0	214	26	1	0	0	0	3	0	0	0	0	0	
1800	131	0	115	14	0	0	1	0	0	0	1	0	0	0	
1900	105	0	92	11	0	0	1	0	1	0	0	0	0	0	
2000	56	0	52	4	0	0	0	0	0	0	0	0	0	0	
2100	34	0	32	2	0	0	0	0	0	0	0	0	0	0	
2200	23	0	22	1	0	0	0	0	0	0	0	0	0	0	
2300	11	0	9	2	0	0	0	0	0	0	0	0	0	0	
07-19	1713	5	1446	219	8	11	10	0	10	0	3	1	0	0	
06-22	1937	5	1646	240	8	12	11	0	11	0	3	1	0	0	
06-00	1971	5	1677	243	8	12	11	0	11	0	3	1	0	0	
00-00	1996	5	1697	247	8	13	11	0	11	0	3	1	0	0	

Job Name/ Title		Site	0	Location	()										
17 January 2024		to	00/01/00	Direction	Westbound										
TIME PERIOD	TOTAL VEHICLES	MOTOR-CYCLES	CARS OR CAR-BASED LGV	LIGHT GOODS VEHICLES	BUSES	TWO AXLE, SIX TYRE, RIGID	THREE AXLE RIGID	FOUR OR MORE AXLE RIGID	FOUR OR LESS AXLE ARTIC	FIVE AXLE ARTIC	SIX OR MORE AXLE ARTIC	FIVE OR LESS AXLE MULTI-TRAILER ARTIC	SIX AXLE MULTI-TRAILER ARTIC	SEVEN OR MORE AXLE ARTIC	
18 January 2024															
0000	5	0	5	0	0	0	0	0	0	0	0	0	0	0	
0100	2	0	1	1	0	0	0	0	0	0	0	0	0	0	
0200	5	0	3	2	0	0	0	0	0	0	0	0	0	0	
0300	2	0	2	0	0	0	0	0	0	0	0	0	0	0	
0400	6	0	5	1	0	0	0	0	0	0	0	0	0	0	
0500	8	0	5	2	0	0	1	0	0	0	0	0	0	0	
0600	27	0	20	6	0	1	0	0	0	0	0	0	0	0	
0700	106	0	78	16	3	2	4	0	3	0	0	0	0	0	
0800	174	1	151	17	1	1	2	0	1	0	0	0	0	0	
0900	97	0	79	15	0	2	0	0	1	0	0	0	0	0	
1000	88	0	68	18	0	2	0	0	0	0	0	0	0	0	
1100	94	0	69	22	1	0	2	0	0	0	0	0	0	0	
1200	106	1	84	19	0	0	2	0	0	0	0	0	0	0	
1300	145	1	120	20	0	2	1	0	1	0	0	0	0	0	
1400	138	0	113	20	0	1	3	0	1	0	0	0	0	0	
1500	176	0	154	17	2	1	2	0	0	0	0	0	0	0	
1600	203	0	167	33	0	2	1	0	0	0	0	0	0	0	
1700	198	0	173	21	1	1	1	0	1	0	0	0	0	0	
1800	156	0	140	13	0	0	0	0	2	0	1	0	0	0	
1900	97	0	85	11	0	0	0	0	1	0	0	0	0	0	
2000	68	0	59	9	0	0	0	0	0	0	0	0	0	0	
2100	38	0	35	2	0	0	0	0	1	0	0	0	0	0	
2200	24	0	21	3	0	0	0	0	0	0	0	0	0	0	
2300	9	0	6	3	0	0	0	0	0	0	0	0	0	0	
07-19	1681	3	1396	231	8	14	18	0	10	0	1	0	0	0	
06-22	1911	3	1595	259	8	15	18	0	12	0	1	0	0	0	
06-00	1944	3	1622	265	8	15	18	0	12	0	1	0	0	0	
00-00	1972	3	1643	271	8	15	19	0	12	0	1	0	0	0	

Job Name/ Title		Site	0	Location	()										
17 January 2024		to	00/01/00	Direction	Westbound										
TIME PERIOD	TOTAL VEHICLES	MOTOR-CYCLES	CARS OR CAR-BASED LGV	LIGHT GOODS VEHICLES	BUSES	TWO AXLE, SIX TYRE, RIGID	THREE AXLE RIGID	FOUR OR MORE AXLE RIGID	FOUR OR LESS AXLE ARTIC	FIVE AXLE ARTIC	SIX OR MORE AXLE ARTIC	FIVE OR LESS AXLE MULTI-TRAILER ARTIC	SIX AXLE MULTI-TRAILER ARTIC	SEVEN OR MORE AXLE ARTIC	
Virtual Day (2)															
0000	4	0	4	0	0	0	0	0	0	0	0	0	0	0	
0100	3	0	2	1	0	0	0	0	0	0	0	0	0	0	
0200	5	0	3	2	0	1	0	0	0	0	0	0	0	0	
0300	1	0	1	0	0	0	0	0	0	0	0	0	0	0	
0400	6	0	6	1	0	0	0	0	0	0	0	0	0	0	
0500	9	0	6	3	0	0	1	0	0	0	0	0	0	0	
0600	28	0	22	5	0	1	0	0	0	0	0	0	0	0	
0700	109	1	82	18	3	2	3	0	2	0	0	0	0	0	
0800	170	1	146	18	1	1	2	0	2	0	0	0	0	0	
0900	109	1	86	19	1	2	1	0	1	0	0	0	0	0	
1000	92	0	76	14	0	1	0	0	1	0	0	0	0	0	
1100	89	0	67	20	1	0	1	0	0	0	1	0	0	0	
1200	104	1	84	17	0	1	3	0	0	0	0	0	0	0	
1300	133	1	112	17	1	2	1	0	1	0	1	1	0	0	
1400	131	0	113	15	0	1	2	0	1	0	0	0	0	0	
1500	177	0	151	22	1	2	2	0	0	0	0	0	0	0	
1600	220	0	185	31	1	1	1	0	1	0	0	0	0	0	
1700	221	0	194	24	1	1	1	0	2	0	0	0	0	0	
1800	144	0	128	14	0	0	1	0	1	0	1	0	0	0	
1900	101	0	89	11	0	0	1	0	1	0	0	0	0	0	
2000	62	0	56	7	0	0	0	0	0	0	0	0	0	0	
2100	36	0	34	2	0	0	0	0	1	0	0	0	0	0	
2200	24	0	22	2	0	0	0	0	0	0	0	0	0	0	
2300	10	0	8	3	0	0	0	0	0	0	0	0	0	0	
07-19	1697	4	1421	225	8	13	14	0	10	0	2	1	0	0	
06-22	1924	4	1621	250	8	14	15	0	12	0	2	1	0	0	
06-00	1958	4	1650	254	8	14	15	0	12	0	2	1	0	0	
00-00	1984	4	1670	259	8	14	15	0	12	0	2	1	0	0	

Job Name/ Title				Site	0	Location			()												
17 January 2024		to 00/01/00		Direction		Westbound															
TIME PERIOD	TOTAL VEHICLES	MOTOR-CYCLES	CARS OR CAR-BASED LGV		LIGHT GOODS VEHICLES	BUSES	TWO AXLE, SIX TYRE, RIGID		THREE AXLE RIGID	FOUR OR MORE AXLE RIGID		FOUR OR LESS AXLE ARTIC		SIX OR MORE AXLE ARTIC		FIVE OR LESS AXLE MULTI-TRAILER ARTIC		SIX AXLE MULTI-TRAILER ARTIC		SEVEN OR MORE AXLE ARTIC	
Virtual Week (Partial weeks =																					
Mon	0	0	0	0	0	0	0	0	0	0	0	0	0	0	0	0	0	0	0	0	0
Tue	0	0	0	0	0	0	0	0	0	0	0	0	0	0	0	0	0	0	0	0	0
Wed	1996	5	1697	247	8	13	11	0	11	0	3	1	0	0	0	0	0	0	0	0	0
Thu	1972	3	1643	271	8	15	19	0	12	0	1	0	0	0	0	0	0	0	0	0	0
Fri	0	0	0	0	0	0	0	0	0	0	0	0	0	0	0	0	0	0	0	0	0
Sat	0	0	0	0	0	0	0	0	0	0	0	0	0	0	0	0	0	0	0	0	0
Sun	0	0	0	0	0	0	0	0	0	0	0	0	0	0	0	0	0	0	0	0	0
00:00	0	0	0	0	0	0	0	0	0	0	0	0	0	0	0	0	0	0	0	0	0
00:00	0	0	0	0	0	0	0	0	0	0	0	0	0	0	0	0	0	0	0	0	0
Grand Total	0	0	0	0	0	0	0	0	0	0	0	0	0	0	0	0	0	0	0	0	0
00:00	0	0	0	0	0	0	0	0	0	0	0	0	0	0	0	0	0	0	0	0	0
Time	Total	Cls	Cls	Cls	Cls	Cls	Cls	Cls	Cls	Cls	Cls	Cls	Cls	Cls	Cls	Cls	Cls	Cls	Cls	Cls	Cls
[--		1	2	3	4	5	6	7	8	9	10	11	12	13							
--	3968	8	3340	518	16	28	30	0	23	0	4	1	0	0	0	0	0	0	0	0	0
00:00	0	0	0	0	0	0	0	0	0	0	0	0	0	0	0	0	0	0	0	0	0
00:00	0	0	0	0	0	0	0	0	0	0	0	0	0	0	0	0	0	0	0	0	0
00:00	0	0	0	0	0	0	0	0	0	0	0	0	0	0	0	0	0	0	0	0	0
00:00	0	0	0	0	0	0	0	0	0	0	0	0	0	0	0	0	0	0	0	0	0
00:00	0	0	0	0	0	0	0	0	0	0	0	0	0	0	0	0	0	0	0	0	0
00:00	0	0	0	0	0	0	0	0	0	0	0	0	0	0	0	0	0	0	0	0	0
00:00	0	0	0	0	0	0	0	0	0	0	0	0	0	0	0	0	0	0	0	0	0
00:00	0	0	0	0	0	0	0	0	0	0	0	0	0	0	0	0	0	0	0	0	0
00:00	0	0	0	0	0	0	0	0	0	0	0	0	0	0	0	0	0	0	0	0	0
00:00	0	0	0	0	0	0	0	0	0	0	0	0	0	0	0	0	0	0	0	0	0
00:00	0	0	0	0	0	0	0	0	0	0	0	0	0	0	0	0	0	0	0	0	0
00:00	0	0	0	0	0	0	0	0	0	0	0	0	0	0	0	0	0	0	0	0	0
00:00	0	0	0	0	0	0	0	0	0	0	0	0	0	0	0	0	0	0	0	0	0
00:00	0	0	0	0	0	0	0	0	0	0	0	0	0	0	0	0	0	0	0	0	0
00:00	0	0	0	0	0	0	0	0	0	0	0	0	0	0	0	0	0	0	0	0	0
00:00	0	0	0	0	0	0	0	0	0	0	0	0	0	0	0	0	0	0	0	0	0
00:00	0	0	0	0	0	0	0	0	0	0	0	0	0	0	0	0	0	0	0	0	0
00:00	0	0	0	0	0	0	0	0	0	0	0	0	0	0	0	0	0	0	0	0	0

Job Name/ Title 17 January 2024 to 00/01/00 Site 0 Location () Direction Westbound

TIME PERIOD	TOTAL VEHICLES	MOTOR-CYCLES	CARS OR CAR-BASED LGV	LIGHT GOODS VEHICLES	BUSES	TWO AXLE, SIX TYRE, RIGID	THREE AXLE RIGID	FOUR OR MORE AXLE RIGID	FOUR OR LESS AXLE ARTIC	FIVE AXLE ARTIC	SIX OR MORE AXLE ARTIC	FIVE OR LESS AXLE MULTI-TRAILER ARTIC	SIX AXLE MULTI-TRAILER ARTIC	SEVEN OR MORE AXLE ARTIC
-------------	----------------	--------------	-----------------------	----------------------	-------	---------------------------	------------------	-------------------------	-------------------------	-----------------	------------------------	---------------------------------------	------------------------------	--------------------------

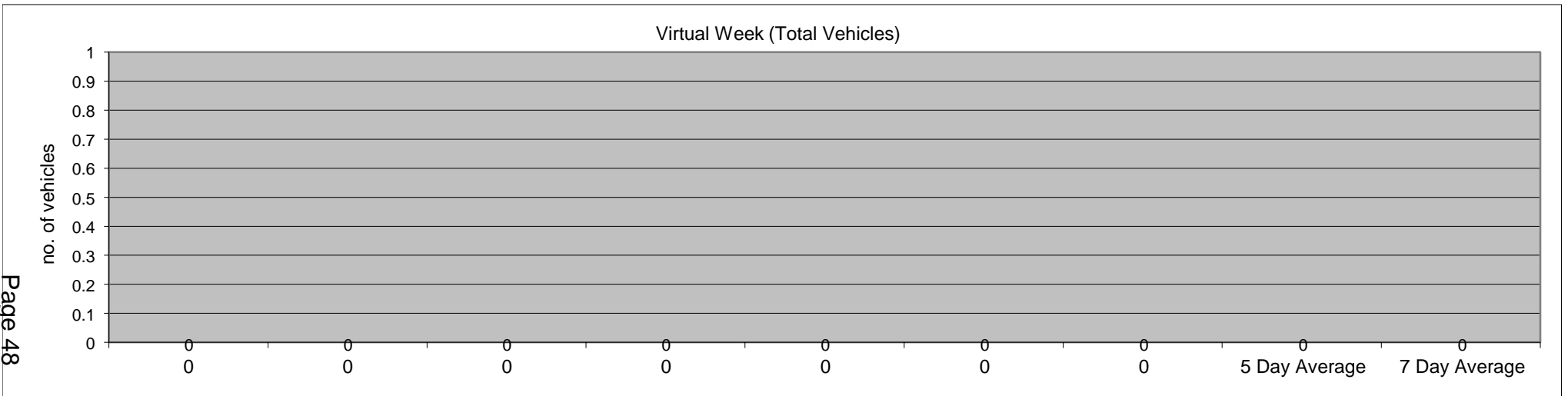
Saturday, 0 January 1900

00:00	0	0	0	0	0	0	0	0	0	0	0	0	0	0
00:00	0	0	0	0	0	0	0	0	0	0	0	0	0	0
00:00	0	0	0	0	0	0	0	0	0	0	0	0	0	0
00:00	0	0	0	0	0	0	0	0	0	0	0	0	0	0
00:00	0	0	0	0	0	0	0	0	0	0	0	0	0	0
00:00	0	0	0	0	0	0	0	0	0	0	0	0	0	0
00:00	0	0	0	0	0	0	0	0	0	0	0	0	0	0
00:00	0	0	0	0	0	0	0	0	0	0	0	0	0	0
00:00	0	0	0	0	0	0	0	0	0	0	0	0	0	0
00:00	0	0	0	0	0	0	0	0	0	0	0	0	0	0
00:00	0	0	0	0	0	0	0	0	0	0	0	0	0	0
00:00	0	0	0	0	0	0	0	0	0	0	0	0	0	0
00:00	0	0	0	0	0	0	0	0	0	0	0	0	0	0
00:00	0	0	0	0	0	0	0	0	0	0	0	0	0	0
00:00	0	0	0	0	0	0	0	0	0	0	0	0	0	0
00:00	0	0	0	0	0	0	0	0	0	0	0	0	0	0
00:00	0	0	0	0	0	0	0	0	0	0	0	0	0	0
00:00	0	0	0	0	0	0	0	0	0	0	0	0	0	0
00:00	0	0	0	0	0	0	0	0	0	0	0	0	0	0
00:00	0	0	0	0	0	0	0	0	0	0	0	0	0	0
00:00	0	0	0	0	0	0	0	0	0	0	0	0	0	0
00:00	0	0	0	0	0	0	0	0	0	0	0	0	0	0
00:00	0	0	0	0	0	0	0	0	0	0	0	0	0	0
00:00	0	0	0	0	0	0	0	0	0	0	0	0	0	0
00:00	0	0	0	0	0	0	0	0	0	0	0	0	0	0

0	0	0	0	0	0	0	0	0	0	0	0	0	0	0
0	0	0	0	0	0	0	0	0	0	0	0	0	0	0
0	0	0	0	0	0	0	0	0	0	0	0	0	0	0
0	0	0	0	0	0	0	0	0	0	0	0	0	0	0

Job Name/ Title				Site	0	Location	()								
17 January 2024			to	00/01/00	Direction	Westbound									
TIME PERIOD	TOTAL VEHICLES	MOTOR- CYCLES	CARS OR CAR- BASED LGV	LIGHT GOODS VEHICLES	BUSES	TWO AXLE, SIX TYRE, RIGID	THREE AXLE RIGID	FOUR OR MORE AXLE RIGID	FOUR OR LESS AXLE ARTIC	FIVE AXLE ARTIC	SIX OR MORE AXLE ARTIC	FIVE OR LESS AXLE MULTI- TRAILER ARTIC	SIX AXLE MULTI- TRAILER ARTIC	SEVEN OR MORE AXLE ARTIC	
Saturday, 0 January 1900															
00:00	0	0	0	0	0	0	0	0	0	0	0	0	0	0	
00:00	0	0	0	0	0	0	0	0	0	0	0	0	0	0	
00:00	0	0	0	0	0	0	0	0	0	0	0	0	0	0	
00:00	0	0	0	0	0	0	0	0	0	0	0	0	0	0	
00:00	0	0	0	0	0	0	0	0	0	0	0	0	0	0	
00:00	0	0	0	0	0	0	0	0	0	0	0	0	0	0	
00:00	0	0	0	0	0	0	0	0	0	0	0	0	0	0	
00:00	0	0	0	0	0	0	0	0	0	0	0	0	0	0	
00:00	0	0	0	0	0	0	0	0	0	0	0	0	0	0	
00:00	0	0	0	0	0	0	0	0	0	0	0	0	0	0	
00:00	0	0	0	0	0	0	0	0	0	0	0	0	0	0	
00:00	0	0	0	0	0	0	0	0	0	0	0	0	0	0	
00:00	0	0	0	0	0	0	0	0	0	0	0	0	0	0	
00:00	0	0	0	0	0	0	0	0	0	0	0	0	0	0	
00:00	0	0	0	0	0	0	0	0	0	0	0	0	0	0	
00:00	0	0	0	0	0	0	0	0	0	0	0	0	0	0	
00:00	0	0	0	0	0	0	0	0	0	0	0	0	0	0	
00:00	0	0	0	0	0	0	0	0	0	0	0	0	0	0	
00:00	0	0	0	0	0	0	0	0	0	0	0	0	0	0	
0	0	0	0	0	0	0	0	0	0	0	0	0	0	0	
0	0	0	0	0	0	0	0	0	0	0	0	0	0	0	
0	0	0	0	0	0	0	0	0	0	0	0	0	0	0	
0	0	0	0	0	0	0	0	0	0	0	0	0	0	0	

Job Name/ Title		Site	0	Location	()										
17 January 2024		to	00/01/00	Direction	Westbound										
TIME PERIOD	TOTAL VEHICLES	MOTOR-CYCLES	CARS OR CAR-BASED LGV	LIGHT GOODS VEHICLES	BUSES	TWO AXLE, SIX TYRE, RIGID	THREE AXLE RIGID	FOUR OR MORE AXLE RIGID	FOUR OR LESS AXLE ARTIC	FIVE AXLE ARTIC	SIX OR MORE AXLE ARTIC	FIVE OR LESS AXLE MULTI-TRAILER ARTIC	SIX AXLE MULTI-TRAILER ARTIC	SEVEN OR MORE AXLE ARTIC	
Virtual Week															
0	0	0	0	0	0	0	0	0	0	0	0	0	0	0	
0	0	0	0	0	0	0	0	0	0	0	0	0	0	0	
0	0	0	0	0	0	0	0	0	0	0	0	0	0	0	
0	0	0	0	0	0	0	0	0	0	0	0	0	0	0	
0	0	0	0	0	0	0	0	0	0	0	0	0	0	0	
0	0	0	0	0	0	0	0	0	0	0	0	0	0	0	
0	0	0	0	0	0	0	0	0	0	0	0	0	0	0	
5 Day Average															
[--]	0	0	0	0	0	0	0	0	0	0	0	0	0	0	
7 Day Average															
[--]	0	0	0	0	0	0	0	0	0	0	0	0	0	0	
Total Vehicles															
[--]	0	0	0	0	0	0	0	0	0	0	0	0	0	0	



Job Name/ Title		Site 0 Location ()														Speed Limit (PSL)		ACPO (SL1)		DFT (SL2)		Mean Speed	85%ile Speed
17 January 2024		to 00/01/00														Direction Westbound							
Time Period	Total Vehicles	0	5	10	15	20	25	30	35	40	45	50	55	60	130	20	20	24	24	35	35	Mean Speed	85%ile Speed
		5	10	15	20	25	30	35	40	45	50	55	60	130			ACPO	ACPO	DFT	DFT			
17 January 2024																							
0000	3	0	0	0	0	0	0	0	0	2	0	0	1	0	3	100	3	100	3	100	47.2	-	
0100	3	0	0	0	0	0	1	1	0	0	1	0	0	0	3	100	3	100	1	33.33	35.8	-	
0200	4	0	0	0	0	1	0	2	0	0	1	0	0	0	4	100	3	75	1	25	33.8	-	
0300	0	0	0	0	0	0	0	0	0	0	0	0	0	0	0	0	0	0	0	0	-	-	
0400	6	0	0	0	0	1	0	1	0	1	1	0	1	1	6	100	5	83.33	4	66.67	43.5	-	
0500	9	0	0	0	0	0	3	2	1	1	0	0	1	1	9	100	9	100	4	44.44	39.7	-	
0600	29	0	1	0	2	2	8	7	4	3	1	1	0	0	26	89.66	24	82.76	9	31.03	31.4	40.9	
0700	112	0	2	8	5	34	37	9	10	5	2	0	0	0	97	86.61	75	66.96	17	15.18	26.4	35.1	
0800	165	0	0	1	9	55	65	25	7	1	2	0	0	0	155	93.94	107	64.85	10	6.061	26.6	31.2	
0900	121	0	1	1	17	31	33	23	11	4	0	0	0	0	102	84.3	78	64.46	15	12.4	26.9	33.7	
1000	95	0	0	1	13	24	21	22	6	6	1	0	1	0	81	85.26	64	67.37	14	14.74	28.1	35.6	
1100	84	0	0	0	12	25	31	10	5	1	0	0	0	0	72	85.71	48	57.14	6	7.143	26.1	32.5	
1200	102	0	0	1	17	40	22	11	10	1	0	0	0	0	84	82.35	52	50.98	11	10.78	25.5	33.3	
1300	121	0	0	5	17	52	28	11	4	2	2	0	0	0	99	81.82	56	46.28	8	6.612	24.8	30.6	
1400	124	0	0	1	26	39	29	16	8	4	1	0	0	0	97	78.23	63	50.81	13	10.48	25.7	33.3	
1500	178	0	0	0	22	57	65	21	9	3	1	0	0	0	156	87.64	112	62.92	13	7.303	26.2	31.7	
1600	236	0	1	3	38	103	60	25	3	3	0	0	0	0	194	82.2	103	43.64	6	2.542	24.2	29.3	
1700	244	0	1	5	28	84	79	36	6	4	0	0	0	1	210	86.07	146	59.84	11	4.508	25.7	31.3	
1800	131	0	1	1	12	33	43	18	16	3	2	2	0	0	117	89.31	95	72.52	23	17.56	28	35.4	
1900	105	0	1	0	10	33	30	21	7	2	0	1	0	0	94	89.52	66	62.86	10	9.524	27.3	33.7	
2000	56	0	0	0	7	11	16	9	7	2	3	1	0	0	49	87.5	40	71.43	13	23.21	29	37.6	
2100	34	0	0	0	4	6	4	11	4	3	1	0	1	0	30	88.24	26	76.47	9	26.47	30.8	40.2	
2200	23	0	0	4	3	4	1	3	5	0	1	1	0	1	16	69.57	12	52.17	8	34.78	29	41.2	
2300	11	0	0	0	0	2	3	1	2	1	1	1	0	0	11	100	10	90.91	5	45.45	34.7	50.9	
07-19	1713	0	6	27	216	577	513	227	95	37	11	2	1	1	1464	85.46	999	58.32	147	8.581	26	32.1	
06-22	1937	0	8	27	239	629	571	275	117	47	16	5	2	1	1663	85.85	1155	59.63	188	9.706	26.3	32.7	
05-00	1971	0	8	31	242	635	575	279	124	48	18	7	2	2	1690	85.74	1177	59.72	201	10.2	26.4	32.8	
00-00	1996	0	8	31	242	637	579	285	125	52	21	7	5	4	1715	85.92	1200	60.12	214	10.72	26.6	33.1	

Job Name/ Title		Site 0 Location ()														Speed Limit (PSL)		ACPO (SL1)		DFT (SL2)		Mean Speed	85%ile Speed
17 January 2024		to 00/01/00														Direction Westbound							
Time Period	Total Vehicles	0	5	10	15	20	25	30	35	40	45	50	55	60	130	20	20	24	24	35	35	Mean Speed	85%ile Speed
		5	10	15	20	25	30	35	40	45	50	55	60	130			ACPO	ACPO	DFT	DFT			
18 January 2024																							
0000	5	0	0	0	0	0	0	1	0	1	3	0	0	0	5	100	5	100	4	80	43.7	-	
0100	2	0	0	0	0	0	0	1	0	0	1	0	0	0	2	100	2	100	1	50	40.3	-	
0200	5	0	0	0	0	0	1	0	0	4	0	0	0	0	5	100	5	100	4	80	40.8	-	
0300	2	0	0	0	0	1	0	0	0	1	0	0	0	0	2	100	1	50	1	50	32.5	-	
0400	6	0	0	0	0	1	1	0	2	0	0	1	1	0	6	100	5	83.33	4	66.67	39.8	-	
0500	8	0	0	0	0	0	1	3	1	0	1	1	1	0	8	100	8	100	4	50	39.8	-	
0600	27	0	0	1	1	6	5	3	6	5	0	0	0	0	25	92.59	21	77.78	11	40.74	30.8	40.1	
0700	106	0	1	3	8	42	22	19	6	4	1	0	0	0	94	88.68	65	61.32	11	10.38	26.4	34.1	
0800	174	0	0	3	13	47	60	35	12	3	1	0	0	0	158	90.8	125	71.84	16	9.195	27.2	32.5	
0900	97	0	0	0	10	28	22	20	11	5	1	0	0	0	87	89.69	64	65.98	17	17.53	28.1	36.4	
1000	88	0	0	0	6	25	30	19	6	1	1	0	0	0	82	93.18	59	67.05	8	9.091	27.4	33.5	
1100	94	0	0	2	10	36	26	15	3	2	0	0	0	0	82	87.23	59	62.77	5	5.319	25.8	32.4	
1200	106	0	0	1	19	30	21	19	9	5	2	0	0	0	86	81.13	64	60.38	16	15.09	27	35	
1300	145	0	0	1	26	40	46	16	11	1	2	0	2	0	118	81.38	86	59.31	16	11.03	26.2	33.5	
1400	138	0	0	4	15	55	30	16	12	4	0	2	0	0	119	86.23	77	55.8	18	13.04	26.3	33	
1500	176	0	0	9	26	48	44	34	12	3	0	0	0	0	141	80.11	100	56.82	15	8.523	25.7	32.8	
1600	203	0	2	1	27	66	53	37	13	4	0	0	0	0	173	85.22	124	61.08	17	8.374	26.2	32.6	
1700	198	0	1	3	21	61	54	38	13	5	2	0	0	0	173	87.37	121	61.11	20	10.1	26.7	32.8	
1800	156	0	0	1	11	45	48	37	7	7	0	0	0	0	144	92.31	107	68.59	14	8.974	27.7	33.8	
1900	97	0	0	1	6	28	30	22	6	4	0	0	0	0	90	92.78	65	67.01	10	10.31	27.7	34.1	
2000	68	0	0	0	0	17	18	18	10	5	0	0	0	0	68	100	56	82.35	15	22.06	30.1	35.8	
2100	38	0	0	0	1	5	14	10	5	1	1	1	0	0	37	97.37	34	89.47	8	21.05	30.9	37.6	
2200	24	0	0	0	1	5	4	5	5	3	0	1	0	0	23	95.83	20	83.33	9	37.5	31.7	40.4	
2300	9	0	0	0	0	1	2	4	1	0	0	1	0	0	9	100	9	100	2	22.22	33.2	-	
07-19	1681	0	4	28	192	523	456	305	115	44	10	2	2	0	1457	86.67	1051	62.52	173	10.29	26.7	33.2	
06-22	1911	0	4	30	200	579	523	358	142	59	11	3	2	0	1677	87.76	1227	64.21	217	11.36	27	33.7	
05-00	1944	0	4	30	201	585	529	367	148	62	11	5	2	0	1709	87.91	1256	64.61	228	11.73	27.1	33.9	
00-00	1972	0	4	30	201	587	532	372	151	68	16	7	4	0	1737	88.08	1282	65.01	246	12.47	27.3	34.2	

Job Name/ Title		Site 0 Location ()														Speed Limit (PSL)		ACPO (SL1)		DFT (SL2)		Mean Speed	85%ile Speed
17 January 2024		to 00/01/00																					
Time Period	Total Vehicles	Speed Bins																					
		0-5	5-10	10-15	15-20	20-25	25-30	30-35	35-40	40-45	45-50	50-55	55-60	60-130	20	20	24	24	35	35	Mean Speed	85%ile Speed	
Virtual Day (2)																							
0000	4	0	0	0	0	0	0	1	0	2	2	0	1	0	4	100	4	100	4	87.5	45	-	
0100	3	0	0	0	0	0	1	1	0	0	1	0	0	0	3	100	3	100	1	40	37.6	-	
0200	5	0	0	0	0	1	1	1	0	2	1	0	0	0	5	100	4	88.89	3	55.56	37.7	-	
0300	1	0	0	0	0	1	0	0	0	1	0	0	0	0	1	100	1	50	1	50	32.5	-	
0400	6	0	0	0	0	1	1	1	1	1	1	1	1	1	6	100	5	83.33	4	66.67	41.7	-	
0500	9	0	0	0	0	0	2	3	1	1	1	1	1	1	9	100	9	100	4	47.06	39.8	-	
0600	28	0	1	1	2	4	7	5	5	4	1	1	0	0	26	91.07	23	80.36	10	35.71	31.1	40.1	
0700	109	0	2	6	7	38	30	14	8	5	2	0	0	0	96	87.61	70	64.22	14	12.84	26.4	34.2	
0800	170	0	0	2	11	51	63	30	10	2	2	0	0	0	157	92.33	116	68.44	13	7.67	26.9	31.9	
0900	109	0	1	1	14	30	28	22	11	5	1	0	0	0	95	86.7	71	65.14	16	14.68	27.4	34.8	
1000	92	0	0	1	10	25	26	21	6	4	1	0	1	0	82	89.07	62	67.21	11	12.02	27.8	34.3	
1100	89	0	0	1	11	31	29	13	4	2	0	0	0	0	77	86.52	54	60.11	6	6.18	25.9	32.5	
1200	104	0	0	1	18	35	22	15	10	3	1	0	0	0	85	81.73	58	55.77	14	12.98	26.3	33.7	
1300	133	0	0	3	22	46	37	14	8	2	2	0	1	0	109	81.58	71	53.38	12	9.023	25.6	31.9	
1400	131	0	0	3	21	47	30	16	10	4	1	1	0	0	108	82.44	70	53.44	16	11.83	26	33.1	
1500	177	0	0	5	24	53	55	28	11	3	1	0	0	0	149	83.9	106	59.89	14	7.91	26	32.5	
1600	220	0	2	2	33	85	57	31	8	4	0	0	0	0	184	83.6	114	51.71	12	5.239	25.1	31.1	
1700	221	0	1	4	25	73	67	37	10	5	1	0	0	1	192	86.65	134	60.41	16	7.014	26.2	32.1	
1800	144	0	1	1	12	39	46	28	12	5	1	1	0	0	131	90.94	101	70.38	19	12.89	27.9	34.3	
1900	101	0	1	1	8	31	30	22	7	3	0	1	0	0	92	91.09	66	64.85	10	9.901	27.5	33.7	
2000	62	0	0	0	4	14	17	14	9	4	2	1	0	0	59	94.35	48	77.42	14	22.58	29.6	36.7	
2100	36	0	0	0	3	6	9	11	5	2	1	1	1	0	34	93.06	30	83.33	9	23.61	30.9	37.5	
2200	24	0	0	2	2	5	3	4	5	2	1	1	0	1	20	82.98	16	68.09	9	36.17	30.4	39.9	
2300	10	0	0	0	0	2	3	3	2	1	1	1	0	0	10	100	10	95	4	35	34	-	
07-19	1697	0	5	28	204	550	485	266	105	41	11	2	2	1	1461	86.06	1025	60.4	160	9.428	26.3	32.7	
06-22	1924	0	6	29	220	604	547	317	130	53	14	4	2	1	1670	86.8	1191	61.9	203	10.52	26.7	33.2	
05-00	1958	0	6	31	222	610	552	323	136	55	15	6	2	1	1700	86.82	1217	62.15	215	10.96	26.7	33.4	
00-00	1984	0	6	31	222	612	556	329	138	60	19	7	5	2	1726	87	1241	62.55	230	11.59	26.9	33.7	

Job Name/ Title		Site 0 Location ()																										
17 January 2024		00/01/00													Direction		Westbound		Speed Limit (PSL)		ACPO (SL1)		DfT (SL2)		Mean Speed		85%ile Speed	
Time Period	Total Vehicles	0 5	5 10	10 15	15 20	20 25	25 30	30 35	35 40	40 45	45 50	50 55	55 60	60 130	20	20	24 ACPO	24 ACPO	35 DFT	35 DFT	Mean Speed	85%ile Speed						
Saturday, 0 January 1900																												
00:00	0	0	0	0	0	0	0	0	0	0	0	0	0	0	0	0	0	0	0	0	0	0						
00:00	0	0	0	0	0	0	0	0	0	0	0	0	0	0	0	0	0	0	0	0	0	0						
00:00	0	0	0	0	0	0	0	0	0	0	0	0	0	0	0	0	0	0	0	0	0	0						
00:00	0	0	0	0	0	0	0	0	0	0	0	0	0	0	0	0	0	0	0	0	0	0						
00:00	0	0	0	0	0	0	0	0	0	0	0	0	0	0	0	0	0	0	0	0	0	0						
00:00	0	0	0	0	0	0	0	0	0	0	0	0	0	0	0	0	0	0	0	0	0	0						
00:00	0	0	0	0	0	0	0	0	0	0	0	0	0	0	0	0	0	0	0	0	0	0						
00:00	0	0	0	0	0	0	0	0	0	0	0	0	0	0	0	0	0	0	0	0	0	0						
00:00	0	0	0	0	0	0	0	0	0	0	0	0	0	0	0	0	0	0	0	0	0	0						
00:00	0	0	0	0	0	0	0	0	0	0	0	0	0	0	0	0	0	0	0	0	0	0						
00:00	0	0	0	0	0	0	0	0	0	0	0	0	0	0	0	0	0	0	0	0	0	0						
00:00	0	0	0	0	0	0	0	0	0	0	0	0	0	0	0	0	0	0	0	0	0	0						
00:00	0	0	0	0	0	0	0	0	0	0	0	0	0	0	0	0	0	0	0	0	0	0						
00:00	0	0	0	0	0	0	0	0	0	0	0	0	0	0	0	0	0	0	0	0	0	0						
00:00	0	0	0	0	0	0	0	0	0	0	0	0	0	0	0	0	0	0	0	0	0	0						
00:00	0	0	0	0	0	0	0	0	0	0	0	0	0	0	0	0	0	0	0	0	0	0						
00:00	0	0	0	0	0	0	0	0	0	0	0	0	0	0	0	0	0	0	0	0	0	0						
00:00	0	0	0	0	0	0	0	0	0	0	0	0	0	0	0	0	0	0	0	0	0	0						
00:00	0	0	0	0	0	0	0	0	0	0	0	0	0	0	0	0	0	0	0	0	0	0						
00:00	0	0	0	0	0	0	0	0	0	0	0	0	0	0	0	0	0	0	0	0	0	0						
00:00	0	0	0	0	0	0	0	0	0	0	0	0	0	0	0	0	0	0	0	0	0	0						
00:00	0	0	0	0	0	0	0	0	0	0	0	0	0	0	0	0	0	0	0	0	0	0						
00:00	0	0	0	0	0	0	0	0	0	0	0	0	0	0	0	0	0	0	0	0	0	0						
00:00	0	0	0	0	0	0	0	0	0	0	0	0	0	0	0	0	0	0	0	0	0	0						
00:00	0	0	0	0	0	0	0	0	0	0	0	0	0	0	0	0	0	0	0	0	0	0						
00:00	0	0	0	0	0	0	0	0	0	0	0	0	0	0	0	0	0	0	0	0	0	0						
00:00	0	0	0	0	0	0	0	0	0	0	0	0	0	0	0	0	0	0	0	0	0	0						
00:00	0	0	0	0	0	0	0	0	0	0	0	0	0	0	0	0	0	0	0	0	0	0						
00:00	0	0	0	0	0	0	0	0	0	0	0	0	0	0	0	0	0	0	0	0	0	0						
00:00	0	0	0	0	0	0	0	0	0	0	0	0	0	0	0	0	0	0	0	0	0	0						

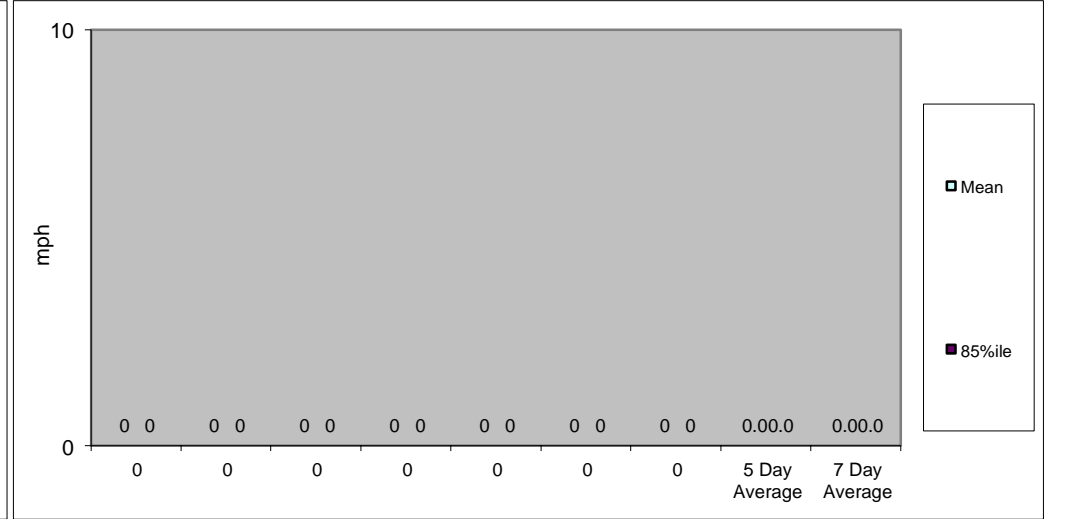
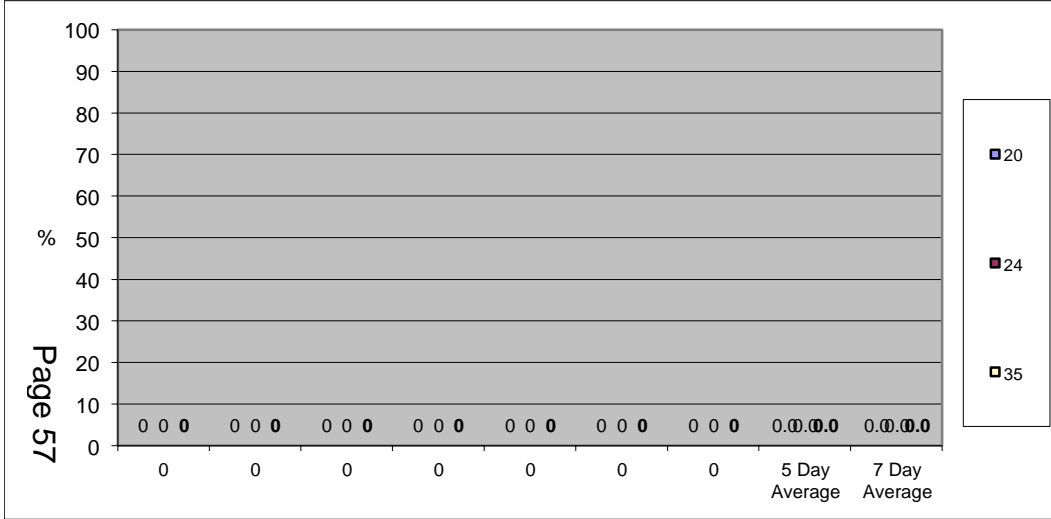
Job Name/ Title		Site 0 Location ()														Speed Limit (PSL)		ACPO (SL1)		DFT (SL2)		Mean Speed	85%ile Speed
17 January 2024		to 00/01/00														Direction Westbound							
Time Period	Total Vehicles	0	5	10	15	20	25	30	35	40	45	50	55	60	20	20	24	24	35	35	Mean Speed	85%ile Speed	
		5	10	15	20	25	30	35	40	45	50	55	60	130			ACPO	ACPO	DFT	DFT			

Virtual Week																					
0	0	0	0	0	0	0	0	0	0	0	0	0	0	0	0	0	0	0	0	0	0
0	0	0	0	0	0	0	0	0	0	0	0	0	0	0	0	0	0	0	0	0	0
0	0	0	0	0	0	0	0	0	0	0	0	0	0	0	0	0	0	0	0	0	0
0	0	0	0	0	0	0	0	0	0	0	0	0	0	0	0	0	0	0	0	0	0
0	0	0	0	0	0	0	0	0	0	0	0	0	0	0	0	0	0	0	0	0	0
0	0	0	0	0	0	0	0	0	0	0	0	0	0	0	0	0	0	0	0	0	0
0	0	0	0	0	0	0	0	0	0	0	0	0	0	0	0	0	0	0	0	0	0

5 Day Average																						
[--]	0	0	0	0	0	0	0	0	0	0	0	0	0	0	0	#DIV/0!	0	#DIV/0!	0	#DIV/0!	0.0	0.0

7 Day Average																						
[--]	0	0	0	0	0	0	0	0	0	0	0	0	0	0	0	#DIV/0!	0	#DIV/0!	0	#DIV/0!	0.0	0.0

Total Vehicles																						
[--]	0	0	0	0	0	0	0	0	0	0	0	0	0	0	0	0.0	0	0.0	0	0.0	0.0	0.0



Job Name/ Title		Site	0	Location											
17 January 2024		to	00/01/00	Direction	Two-Way										
TIME PERIOD	TOTAL VEHICLES	MOTOR-CYCLES	CARS OR CAR-BASED LGV	LIGHT GOODS VEHICLES	BUSES	TWO AXLE, SIX TYRE, RIGID	THREE AXLE RIGID	FOUR OR MORE AXLE RIGID	FOUR OR LESS AXLE ARTIC	FIVE AXLE ARTIC	SIX OR MORE AXLE ARTIC	FIVE OR LESS AXLE MULTI-TRAILER ARTIC	SIX AXLE MULTI-TRAILER ARTIC	SEVEN OR MORE AXLE ARTIC	
17 January 2024															
0000	4	0	4	0	0	0	0	0	0	0	0	0	0	0	
0100	5	0	4	1	0	0	0	0	0	0	0	0	0	0	
0200	4	0	2	1	0	1	0	0	0	0	0	0	0	0	
0300	3	1	1	0	0	0	1	0	0	0	0	0	0	0	
0400	21	1	18	1	0	0	0	0	1	0	0	0	0	0	
0500	44	0	35	6	0	0	1	0	2	0	0	0	0	0	
0600	104	0	79	22	0	1	2	0	0	0	0	0	0	0	
0700	291	2	223	53	3	3	5	0	2	0	0	0	0	0	
0800	383	1	320	46	4	5	3	0	4	0	0	0	0	0	
0900	238	2	187	43	1	3	1	0	1	0	0	0	0	0	
1000	213	0	179	30	0	2	0	0	2	0	0	0	0	0	
1100	189	0	152	35	1	0	0	0	0	0	1	0	0	0	
1200	191	1	153	30	0	2	5	0	0	0	0	0	0	0	
1300	244	2	200	34	2	2	1	0	1	0	1	1	0	0	
1400	226	0	197	25	0	1	0	0	2	0	0	1	0	0	
1500	324	1	267	46	1	5	3	0	1	0	0	0	0	0	
1600	432	3	361	56	3	3	2	0	4	0	0	0	0	0	
1700	433	0	381	45	1	1	0	0	4	0	1	0	0	0	
1800	233	1	206	23	0	1	1	0	0	0	1	0	0	0	
1900	175	0	158	15	0	0	1	0	1	0	0	0	0	0	
2000	104	0	97	7	0	0	0	0	0	0	0	0	0	0	
2100	61	0	58	3	0	0	0	0	0	0	0	0	0	0	
2200	41	0	38	3	0	0	0	0	0	0	0	0	0	0	
2300	20	0	17	3	0	0	0	0	0	0	0	0	0	0	
07-19	3397	13	2826	466	16	28	21	0	21	0	4	2	0	0	
06-22	3841	13	3218	513	16	29	24	0	22	0	4	2	0	0	
06-00	3902	13	3273	519	16	29	24	0	22	0	4	2	0	0	
00-00	3983	15	3337	528	16	30	26	0	25	0	4	2	0	0	

Job Name/ Title		Site	0	Location											
17 January 2024		to	00/01/00	Direction	Two-Way										
TIME PERIOD	TOTAL VEHICLES	MOTOR-CYCLES	CARS OR CAR-BASED LGV	LIGHT GOODS VEHICLES	BUSES	TWO AXLE, SIX TYRE, RIGID	THREE AXLE RIGID	FOUR OR MORE AXLE RIGID	FOUR OR LESS AXLE ARTIC	FIVE AXLE ARTIC	SIX OR MORE AXLE ARTIC	FIVE OR LESS AXLE MULTI-TRAILER ARTIC	SIX AXLE MULTI-TRAILER ARTIC	SEVEN OR MORE AXLE ARTIC	
18 January 2024															
0000	7	0	7	0	0	0	0	0	0	0	0	0	0	0	
0100	4	0	1	2	0	0	1	0	0	0	0	0	0	0	
0200	7	0	4	3	0	0	0	0	0	0	0	0	0	0	
0300	6	1	4	1	0	0	0	0	0	0	0	0	0	0	
0400	19	1	15	1	0	0	0	0	2	0	0	0	0	0	
0500	40	0	32	4	0	0	1	0	3	0	0	0	0	0	
0600	103	0	73	28	0	1	0	0	0	0	1	0	0	0	
0700	277	1	212	48	4	2	7	0	3	0	0	0	0	0	
0800	394	1	329	53	3	4	3	0	1	0	0	0	0	0	
0900	222	0	181	33	1	4	1	0	1	0	0	1	0	0	
1000	195	0	146	42	2	2	3	0	0	0	0	0	0	0	
1100	192	0	138	48	1	1	4	0	0	0	0	0	0	0	
1200	206	1	168	34	0	0	3	0	0	0	0	0	0	0	
1300	266	1	214	40	2	2	3	0	3	0	0	1	0	0	
1400	260	0	212	40	0	2	5	0	1	0	0	0	0	0	
1500	335	0	282	40	3	4	4	0	2	0	0	0	0	0	
1600	400	1	327	66	2	2	1	0	1	0	0	0	0	0	
1700	337	1	292	37	1	2	2	0	1	0	1	0	0	0	
1800	262	0	236	22	0	0	0	0	3	0	1	0	0	0	
1900	162	0	144	14	0	0	3	0	1	0	0	0	0	0	
2000	110	0	100	10	0	0	0	0	0	0	0	0	0	0	
2100	72	0	65	5	0	0	1	0	1	0	0	0	0	0	
2200	47	0	41	6	0	0	0	0	0	0	0	0	0	0	
2300	18	0	14	4	0	0	0	0	0	0	0	0	0	0	
07-19	3346	6	2737	503	19	25	36	0	16	0	2	2	0	0	
06-22	3793	6	3119	560	19	26	40	0	18	0	3	2	0	0	
06-00	3858	6	3174	570	19	26	40	0	18	0	3	2	0	0	
00-00	3941	8	3237	581	19	26	42	0	23	0	3	2	0	0	

Job Name/ Title			Site		Location		0		()						
17 January 2024			to		00/01/00		Direction		Two-Way						
TIME PERIOD	TOTAL VEHICLES	MOTOR-CYCLES	CARS OR CAR-BASED LGV	LIGHT GOODS VEHICLES	BUSES	TWO AXLE, SIX TYRE, RIGID	THREE AXLE RIGID	FOUR OR MORE AXLE RIGID	FOUR OR LESS AXLE ARTIC	FIVE AXLE ARTIC	SIX OR MORE AXLE ARTIC	FIVE OR LESS AXLE MULTI-TRAILER ARTIC	SIX AXLE MULTI-TRAILER ARTIC	SEVEN OR MORE AXLE ARTIC	
Virtual Day (2)															
0000	6	0	6	0	0	0	0	0	0	0	0	0	0	0	
0100	5	0	3	2	0	0	1	0	0	0	0	0	0	0	
0200	6	0	3	2	0	1	0	0	0	0	0	0	0	0	
0300	5	1	3	1	0	0	1	0	0	0	0	0	0	0	
0400	20	1	17	1	0	0	0	0	2	0	0	0	0	0	
0500	42	0	34	5	0	0	1	0	3	0	0	0	0	0	
0600	104	0	76	25	0	1	1	0	0	0	1	0	0	0	
0700	284	2	218	51	4	3	6	0	3	0	0	0	0	0	
0800	389	1	325	50	4	5	3	0	3	0	0	0	0	0	
0900	230	1	184	38	1	4	1	0	1	0	0	1	0	0	
1000	204	0	163	36	1	2	2	0	1	0	0	0	0	0	
1100	191	0	145	42	1	1	2	0	0	0	1	0	0	0	
1200	199	1	161	32	0	1	4	0	0	0	0	0	0	0	
1300	255	2	207	37	2	2	2	0	2	0	1	1	0	0	
1400	243	0	205	33	0	2	3	0	2	0	0	1	0	0	
1500	330	1	275	43	2	5	4	0	2	0	0	0	0	0	
1600	416	2	344	61	3	3	2	0	3	0	0	0	0	0	
1700	385	1	337	41	1	2	1	0	3	0	1	0	0	0	
1800	248	1	221	23	0	1	1	0	2	0	1	0	0	0	
1900	169	0	151	15	0	0	2	0	1	0	0	0	0	0	
2000	107	0	99	9	0	0	0	0	0	0	0	0	0	0	
2100	67	0	62	4	0	0	1	0	1	0	0	0	0	0	
2200	44	0	40	5	0	0	0	0	0	0	0	0	0	0	
2300	19	0	16	4	0	0	0	0	0	0	0	0	0	0	
07-19	3372	10	2782	485	18	27	29	0	19	0	3	2	0	0	
06-22	3817	10	3169	537	18	28	32	0	20	0	4	2	0	0	
06-00	3880	10	3224	545	18	28	32	0	20	0	4	2	0	0	
00-00	3962	12	3287	555	18	28	34	0	24	0	4	2	0	0	

Job Name/ Title				Site		Location									
17 January 2024 to 00/01/00				0		()		Two-Way							
TIME PERIOD	TOTAL VEHICLES	MOTOR-CYCLES	CARS OR CAR-BASED LGV	LIGHT GOODS VEHICLES	BUSES	TWO AXLE, SIX TYRE, RIGID	THREE AXLE RIGID	FOUR OR MORE AXLE RIGID	FOUR OR LESS AXLE ARTIC	FIVE AXLE ARTIC	SIX OR MORE AXLE ARTIC	FIVE OR LESS AXLE MULTI-TRAILER ARTIC	SIX AXLE MULTI-TRAILER ARTIC	SEVEN OR MORE AXLE ARTIC	
Virtual Week (Partial weeks =															
Mon	0	0	0	0	0	0	0	0	0	0	0	0	0	0	0
Tue	0	0	0	0	0	0	0	0	0	0	0	0	0	0	0
Wed	3983	15	3337	528	16	30	26	0	25	0	4	2	0	0	
Thu	3941	8	3237	581	19	26	42	0	23	0	3	2	0	0	
Fri	0	0	0	0	0	0	0	0	0	0	0	0	0	0	
Sat	0	0	0	0	0	0	0	0	0	0	0	0	0	0	
Sun	0	0	0	0	0	0	0	0	0	0	0	0	0	0	
00:00	0	0	0	0	0	0	0	0	0	0	0	0	0	0	
00:00	0	0	0	0	0	0	0	0	0	0	0	0	0	0	
Grand Total	0	0	0	0	0	0	0	0	0	0	0	0	0	0	
00:00	0	0	0	0	0	0	0	0	0	0	0	0	0	0	
Time	Total	Cls	Cls	Cls	Cls	Cls	Cls	Cls	Cls	Cls	Cls	Cls	Cls	Cls	
[--		1	2	3	4	5	6	7	8	9	10	11	12	13	
--	7924	23	6574	1109	35	56	68	0	48	0	7	4	0	0	
00:00	0	0	0	0	0	0	0	0	0	0	0	0	0	0	
00:00	0	0	0	0	0	0	0	0	0	0	0	0	0	0	
00:00	0	0	0	0	0	0	0	0	0	0	0	0	0	0	
00:00	0	0	0	0	0	0	0	0	0	0	0	0	0	0	
00:00	0	0	0	0	0	0	0	0	0	0	0	0	0	0	
00:00	0	0	0	0	0	0	0	0	0	0	0	0	0	0	
00:00	0	0	0	0	0	0	0	0	0	0	0	0	0	0	
00:00	0	0	0	0	0	0	0	0	0	0	0	0	0	0	
00:00	0	0	0	0	0	0	0	0	0	0	0	0	0	0	
00:00	0	0	0	0	0	0	0	0	0	0	0	0	0	0	
00:00	0	0	0	0	0	0	0	0	0	0	0	0	0	0	
00:00	0	0	0	0	0	0	0	0	0	0	0	0	0	0	
00:00	0	0	0	0	0	0	0	0	0	0	0	0	0	0	
00:00	0	0	0	0	0	0	0	0	0	0	0	0	0	0	
00:00	0	0	0	0	0	0	0	0	0	0	0	0	0	0	
00:00	0	0	0	0	0	0	0	0	0	0	0	0	0	0	
00:00	0	0	0	0	0	0	0	0	0	0	0	0	0	0	
00:00	0	0	0	0	0	0	0	0	0	0	0	0	0	0	
00:00	0	0	0	0	0	0	0	0	0	0	0	0	0	0	
00:00	0	0	0	0	0	0	0	0	0	0	0	0	0	0	
00:00	0	0	0	0	0	0	0	0	0	0	0	0	0	0	
00:00	0	0	0	0	0	0	0	0	0	0	0	0	0	0	

Job Name/ Title 17 January 2024 to 00/01/00 Site 0 Location () Direction Two-Way

TIME PERIOD	TOTAL VEHICLES	MOTOR-CYCLES	CARS OR CAR-BASED LGV	LIGHT GOODS VEHICLES	BUSES	TWO AXLE, SIX TYRE, RIGID	THREE AXLE RIGID	FOUR OR MORE AXLE RIGID	FOUR OR LESS AXLE ARTIC	FIVE AXLE ARTIC	SIX OR MORE AXLE ARTIC	FIVE OR LESS AXLE MULTI-TRAILER ARTIC	SIX AXLE MULTI-TRAILER ARTIC	SEVEN OR MORE AXLE ARTIC
-------------	----------------	--------------	-----------------------	----------------------	-------	---------------------------	------------------	-------------------------	-------------------------	-----------------	------------------------	---------------------------------------	------------------------------	--------------------------

Saturday, 0 January 1900

00:00	0	0	0	0	0	0	0	0	0	0	0	0	0	0
00:00	0	0	0	0	0	0	0	0	0	0	0	0	0	0
00:00	0	0	0	0	0	0	0	0	0	0	0	0	0	0
00:00	0	0	0	0	0	0	0	0	0	0	0	0	0	0
00:00	0	0	0	0	0	0	0	0	0	0	0	0	0	0
00:00	0	0	0	0	0	0	0	0	0	0	0	0	0	0
00:00	0	0	0	0	0	0	0	0	0	0	0	0	0	0
00:00	0	0	0	0	0	0	0	0	0	0	0	0	0	0
00:00	0	0	0	0	0	0	0	0	0	0	0	0	0	0
00:00	0	0	0	0	0	0	0	0	0	0	0	0	0	0
00:00	0	0	0	0	0	0	0	0	0	0	0	0	0	0
00:00	0	0	0	0	0	0	0	0	0	0	0	0	0	0
00:00	0	0	0	0	0	0	0	0	0	0	0	0	0	0
00:00	0	0	0	0	0	0	0	0	0	0	0	0	0	0
00:00	0	0	0	0	0	0	0	0	0	0	0	0	0	0
00:00	0	0	0	0	0	0	0	0	0	0	0	0	0	0
00:00	0	0	0	0	0	0	0	0	0	0	0	0	0	0
00:00	0	0	0	0	0	0	0	0	0	0	0	0	0	0
00:00	0	0	0	0	0	0	0	0	0	0	0	0	0	0
00:00	0	0	0	0	0	0	0	0	0	0	0	0	0	0
00:00	0	0	0	0	0	0	0	0	0	0	0	0	0	0
00:00	0	0	0	0	0	0	0	0	0	0	0	0	0	0
00:00	0	0	0	0	0	0	0	0	0	0	0	0	0	0

0	0	0	0	0	0	0	0	0	0	0	0	0	0	0
0	0	0	0	0	0	0	0	0	0	0	0	0	0	0
0	0	0	0	0	0	0	0	0	0	0	0	0	0	0
0	0	0	0	0	0	0	0	0	0	0	0	0	0	0

Job Name/ Title 17 January 2024 to 00/01/00 Site 0 Location () Direction Two-Way

TIME PERIOD	TOTAL VEHICLES	MOTOR-CYCLES	CARS OR CAR-BASED LGV	LIGHT GOODS VEHICLES	BUSES	TWO AXLE, SIX TYRE, RIGID	THREE AXLE RIGID	FOUR OR MORE AXLE RIGID	FOUR OR LESS AXLE ARTIC	FIVE AXLE ARTIC	SIX OR MORE AXLE ARTIC	FIVE OR LESS AXLE MULTI-TRAILER ARTIC	SIX AXLE MULTI-TRAILER ARTIC	SEVEN OR MORE AXLE ARTIC
-------------	----------------	--------------	-----------------------	----------------------	-------	---------------------------	------------------	-------------------------	-------------------------	-----------------	------------------------	---------------------------------------	------------------------------	--------------------------

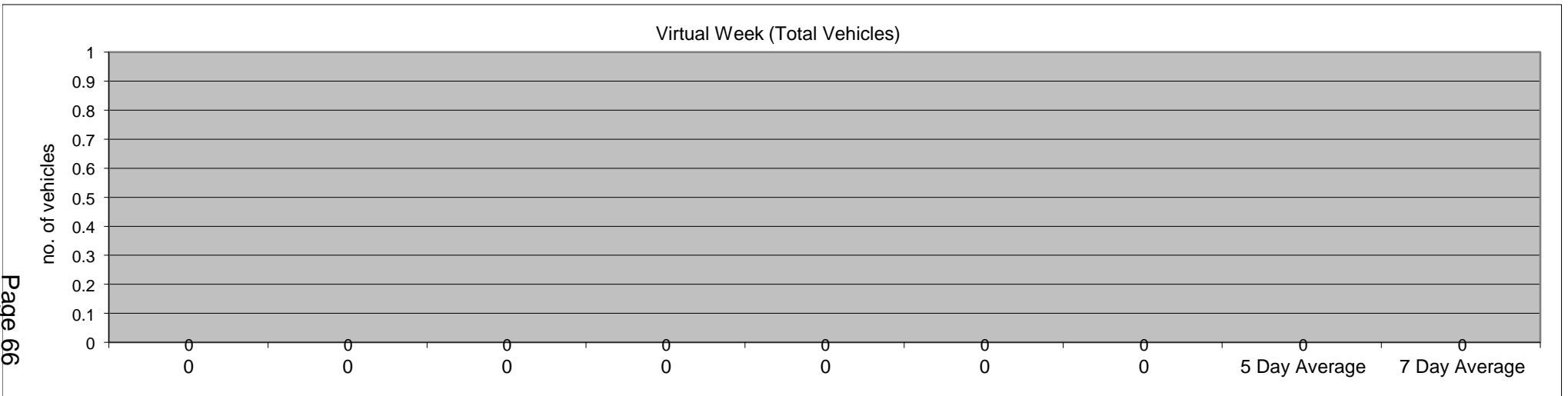
Saturday, 0 January 1900

00:00	0	0	0	0	0	0	0	0	0	0	0	0	0	0
00:00	0	0	0	0	0	0	0	0	0	0	0	0	0	0
00:00	0	0	0	0	0	0	0	0	0	0	0	0	0	0
00:00	0	0	0	0	0	0	0	0	0	0	0	0	0	0
00:00	0	0	0	0	0	0	0	0	0	0	0	0	0	0
00:00	0	0	0	0	0	0	0	0	0	0	0	0	0	0
00:00	0	0	0	0	0	0	0	0	0	0	0	0	0	0
00:00	0	0	0	0	0	0	0	0	0	0	0	0	0	0
00:00	0	0	0	0	0	0	0	0	0	0	0	0	0	0
00:00	0	0	0	0	0	0	0	0	0	0	0	0	0	0
00:00	0	0	0	0	0	0	0	0	0	0	0	0	0	0
00:00	0	0	0	0	0	0	0	0	0	0	0	0	0	0
00:00	0	0	0	0	0	0	0	0	0	0	0	0	0	0
00:00	0	0	0	0	0	0	0	0	0	0	0	0	0	0
00:00	0	0	0	0	0	0	0	0	0	0	0	0	0	0
00:00	0	0	0	0	0	0	0	0	0	0	0	0	0	0
00:00	0	0	0	0	0	0	0	0	0	0	0	0	0	0
00:00	0	0	0	0	0	0	0	0	0	0	0	0	0	0
00:00	0	0	0	0	0	0	0	0	0	0	0	0	0	0
00:00	0	0	0	0	0	0	0	0	0	0	0	0	0	0
00:00	0	0	0	0	0	0	0	0	0	0	0	0	0	0
00:00	0	0	0	0	0	0	0	0	0	0	0	0	0	0
00:00	0	0	0	0	0	0	0	0	0	0	0	0	0	0
00:00	0	0	0	0	0	0	0	0	0	0	0	0	0	0
00:00	0	0	0	0	0	0	0	0	0	0	0	0	0	0

0	0	0	0	0	0	0	0	0	0	0	0	0	0	0
0	0	0	0	0	0	0	0	0	0	0	0	0	0	0
0	0	0	0	0	0	0	0	0	0	0	0	0	0	0
0	0	0	0	0	0	0	0	0	0	0	0	0	0	0

Job Name/ Title		Site	0	Location	()										
17 January 2024		to	00/01/00	Direction	Two-Way										
TIME PERIOD	TOTAL VEHICLES	MOTOR-CYCLES	CARS OR CAR-BASED LGV	LIGHT GOODS VEHICLES	BUSES	TWO AXLE, SIX TYRE, RIGID	THREE AXLE RIGID	FOUR OR MORE AXLE RIGID	FOUR OR LESS AXLE ARTIC	FIVE AXLE ARTIC	SIX OR MORE AXLE ARTIC	FIVE OR LESS AXLE MULTI-TRAILER ARTIC	SIX AXLE MULTI-TRAILER ARTIC	SEVEN OR MORE AXLE ARTIC	
Virtual Week															
0	0	0	0	0	0	0	0	0	0	0	0	0	0	0	
0	0	0	0	0	0	0	0	0	0	0	0	0	0	0	
0	0	0	0	0	0	0	0	0	0	0	0	0	0	0	
0	0	0	0	0	0	0	0	0	0	0	0	0	0	0	
0	0	0	0	0	0	0	0	0	0	0	0	0	0	0	
0	0	0	0	0	0	0	0	0	0	0	0	0	0	0	
0	0	0	0	0	0	0	0	0	0	0	0	0	0	0	
5 Day Average															
[--]	0	0	0	0	0	0	0	0	0	0	0	0	0	0	
7 Day Average															
[--]	0	0	0	0	0	0	0	0	0	0	0	0	0	0	
Total Vehicles															
[--]	0	0	0	0	0	0	0	0	0	0	0	0	0	0	

Virtual Week (Total Vehicles)



Job Name/ Title										Site	0	Location				()		ACPO (SL1)		DFT (SL2)		Mean	85%ile
17 January 2024										Direction	Two-Way					Speed Limit (PSL)				Speed	Speed		
Time Period	Total Vehicles	0	5	10	15	20	25	30	35	40	45	50	55	60	130	20	20	24	24	35	35	Mean	85%ile
		5	10	15	20	25	30	35	40	45	50	55	60	130			ACPO	ACPO	DFT	DFT	Speed	Speed	
17 January 2024																							
0000	4	0	0	0	0	0	0	1	0	2	0	0	1	0	4	100	4	100	3	75	44	-	
0100	5	0	0	0	0	1	1	1	1	0	1	0	0	0	5	100	4	80	2	40	33.5	-	
0200	4	0	0	0	0	1	0	2	0	0	1	0	0	0	4	100	3	75	1	25	33.8	-	
0300	3	0	0	0	0	0	1	1	0	0	0	1	0	0	3	100	3	100	1	33.33	37.5	-	
0400	21	0	0	0	0	1	0	5	3	6	3	1	1	1	21	100	20	95.24	15	71.43	41	50.4	
0500	44	0	0	0	0	0	9	8	6	7	8	3	2	1	44	100	44	100	27	61.36	39.8	48.4	
0600	104	0	2	0	3	12	13	27	20	18	7	1	1	0	99	95.19	90	86.54	47	45.19	34.1	42.8	
0700	291	0	4	10	8	67	93	51	39	13	6	0	0	0	269	92.44	216	74.23	58	19.93	28.5	36.5	
0800	383	0	1	1	18	96	128	88	37	9	5	0	0	0	363	94.78	283	73.89	51	13.32	28.3	34.6	
0900	238	0	2	1	25	69	64	44	23	8	0	2	0	0	210	88.24	149	62.61	33	13.87	27.2	34.4	
1000	213	0	0	2	22	57	58	48	13	10	2	0	1	0	189	88.73	145	68.08	26	12.21	27.8	34.3	
1100	189	0	0	0	22	67	58	23	14	3	2	0	0	0	167	88.36	110	58.2	19	10.05	26.5	32.6	
1200	191	0	0	1	19	65	54	28	17	5	2	0	0	0	171	89.53	119	62.3	24	12.57	26.9	33.7	
1300	244	0	2	5	22	89	58	38	19	7	4	0	0	0	215	88.11	144	59.02	30	12.3	26.7	34.2	
1400	226	0	0	1	30	62	57	44	20	11	1	0	0	0	195	86.28	141	62.39	32	14.16	27.5	34.9	
1500	324	0	1	0	29	88	115	55	23	10	3	0	0	0	294	90.74	228	70.37	36	11.11	27.4	33.8	
1600	432	0	6	6	55	164	108	59	23	8	2	0	0	1	365	84.49	221	51.16	34	7.87	25.5	32.3	
1700	433	0	2	6	37	123	135	84	31	13	1	0	0	1	388	89.61	294	67.9	46	10.62	27.2	33.4	
1800	233	0	1	1	19	46	62	55	32	11	2	3	1	0	212	90.99	180	77.25	49	21.03	29.4	35.9	
1900	175	0	1	1	13	45	44	39	23	6	2	1	0	0	160	91.43	124	70.86	32	18.29	28.9	36.2	
2000	104	0	0	0	11	18	27	16	13	9	8	1	0	1	93	89.42	79	75.96	32	30.77	30.8	42	
2100	61	0	0	0	4	7	13	16	10	8	2	0	1	0	57	93.44	52	85.25	21	34.43	32.3	41	
2200	41	0	0	5	4	8	5	7	6	1	3	1	0	1	32	78.05	26	63.41	12	29.27	29.4	40.7	
2300	20	0	0	0	1	3	4	2	3	4	2	1	0	0	19	95	17	85	10	50	34.3	44.9	
07-19	3397	0	19	34	306	993	990	617	291	108	30	5	2	2	3038	89.43	2230	65.65	438	12.89	27.4	34.3	
06-22	3841	0	22	35	337	1075	1087	715	357	149	49	8	4	3	3447	89.74	2575	67.04	570	14.84	27.8	34.9	
05-00	3902	0	22	40	342	1086	1096	724	366	154	54	10	4	4	3498	89.65	2618	67.09	592	15.17	27.8	35.1	
00-00	3983	0	22	40	342	1089	1107	742	376	169	67	15	8	6	3579	89.86	2696	67.69	641	16.09	28.1	35.3	

Job Name/ Title										Site	0	Location				()		ACPO (SL1)		DFT (SL2)		Mean	85%ile
17 January 2024										Direction	Two-Way					Speed Limit (PSL)							
Time Period	Total Vehicles	Speed Bins														Speed Limit (PSL)		ACPO (SL1)		DFT (SL2)		Mean Speed	85%ile Speed
		0	5	10	15	20	25	30	35	40	45	50	55	60	60	130	20	20	24	24	35		
		5	10	15	20	25	30	35	40	45	50	55	60	130			ACPO	ACPO	DFT	DFT			
18 January 2024																							
0000	7	0	0	0	0	0	0	1	1	1	3	1	0	0	7	100	7	100	6	85.71	43.9	-	
0100	4	0	0	0	0	0	1	1	1	0	1	0	0	0	4	100	4	100	2	50	36.7	-	
0200	7	0	0	0	0	0	1	0	1	5	0	0	0	0	7	100	7	100	6	85.71	40.1	-	
0300	6	0	0	0	0	1	1	0	0	3	0	1	0	0	6	100	5	83.33	4	66.67	38.7	-	
0400	19	0	0	0	0	1	3	2	5	2	2	2	2	0	19	100	18	94.74	13	68.42	40	52.8	
0500	40	0	0	0	1	0	2	8	8	8	9	3	1	0	39	97.5	39	97.5	29	72.5	40.5	49.3	
0600	103	0	0	1	4	11	15	29	28	11	4	0	0	0	98	95.15	92	89.32	43	41.75	32.9	40	
0700	277	0	3	4	18	77	69	66	22	12	4	2	0	0	252	90.97	198	71.48	40	14.44	28	34.9	
0800	394	0	0	3	27	94	135	89	35	5	3	3	0	0	364	92.39	294	74.62	46	11.68	28	33.7	
0900	222	0	0	1	20	57	56	46	27	8	6	1	0	0	201	90.54	153	68.92	42	18.92	28.6	36.4	
1000	195	0	1	1	6	48	65	46	23	3	2	0	0	0	187	95.9	147	75.38	28	14.36	28.5	34.6	
1100	192	0	0	2	12	59	60	31	18	3	6	1	0	0	178	92.71	142	73.96	28	14.58	28.1	34.9	
1200	206	0	0	1	26	53	49	47	21	6	3	0	0	0	179	86.89	137	66.5	30	14.56	27.8	34.9	
1300	266	0	0	2	35	57	79	49	26	9	6	1	2	0	229	86.09	181	68.05	44	16.54	28.1	35.7	
1400	260	0	0	5	16	86	67	38	32	12	1	3	0	0	239	91.92	176	67.69	48	18.46	28	36	
1500	335	0	1	12	30	84	90	72	31	11	4	0	0	0	292	87.16	220	65.67	46	13.73	27.4	34.6	
1600	400	0	7	3	37	102	111	90	40	9	0	1	0	0	353	88.25	279	69.75	50	12.5	27.5	34.3	
1700	337	0	2	4	23	87	97	72	32	15	3	2	0	0	308	91.39	238	70.62	52	15.43	28.3	35.2	
1800	262	0	0	2	11	64	75	73	19	12	4	1	0	1	249	95.04	200	76.34	37	14.12	29.2	34.8	
1900	162	0	0	1	12	44	46	31	18	7	2	0	1	0	149	91.98	112	69.14	28	17.28	28.5	35.8	
2000	110	0	0	0	4	26	23	32	17	8	0	0	0	0	106	96.36	87	79.09	25	22.73	30.1	36.3	
2100	72	0	0	0	2	8	21	19	13	5	3	1	0	0	70	97.22	64	88.89	22	30.56	31.9	38.8	
2200	47	0	0	0	1	8	9	13	8	4	0	4	0	0	46	97.87	40	85.11	16	34.04	32.8	40.6	
2300	18	0	0	0	0	2	4	6	2	3	0	1	0	0	18	100	17	94.44	6	33.33	33.7	42.4	
07-19	3346	0	14	40	261	868	953	719	326	105	42	15	2	1	3031	90.59	2365	70.68	491	14.67	28.1	34.9	
06-22	3793	0	14	42	283	957	1058	830	402	136	51	16	3	1	3454	91.06	2720	71.71	609	16.06	28.4	35.3	
05-00	3858	0	14	42	284	967	1071	849	412	143	51	21	3	1	3518	91.19	2777	71.98	631	16.36	28.4	35.3	
00-00	3941	0	14	42	285	969	1079	861	428	162	66	28	6	1	3600	91.35	2857	72.49	691	17.53	28.7	35.8	

Job Name/ Title		Site 0 Location ()														Speed Limit (PSL)		ACPO (SL1)		DFT (SL2)		Mean Speed	85%ile Speed
17 January 2024		to 00/01/00																					
Time Period	Total Vehicles	0	5	10	15	20	25	30	35	40	45	50	55	60	130	20	20	24	24	35	35	Mean Speed	85%ile Speed
		5	10	15	20	25	30	35	40	45	50	55	60	130			ACPO	ACPO	DFT	DFT			
Virtual Day (2)																							
0000	6	0	0	0	0	0	0	1	1	2	2	1	1	0	6	100	6	100	5	81.82	43.9	-	
0100	5	0	0	0	0	1	1	1	1	0	1	0	0	0	5	100	4	88.89	2	44.44	34.9	-	
0200	6	0	0	0	0	1	1	1	1	3	1	0	0	0	6	100	5	90.91	4	63.64	37.8	-	
0300	5	0	0	0	0	1	1	1	0	2	0	1	0	0	5	100	4	88.89	3	55.56	38.3	-	
0400	20	0	0	0	0	1	2	4	4	4	3	2	2	1	20	100	19	95	14	70	40.5	51.4	
0500	42	0	0	0	1	0	6	8	7	8	9	3	2	1	42	98.81	42	98.81	28	66.67	40.2	48.6	
0600	104	0	1	1	4	12	14	28	24	15	6	1	1	0	99	95.17	91	87.92	45	43.48	33.5	41.6	
0700	284	0	4	7	13	72	81	59	31	13	5	1	0	0	261	91.73	207	72.89	49	17.25	28.3	35.7	
0800	389	0	1	2	23	95	132	89	36	7	4	2	0	0	364	93.56	289	74.26	49	12.48	28.2	34.1	
0900	230	0	1	1	23	63	60	45	25	8	3	2	0	0	206	89.35	151	65.65	38	16.3	27.9	35.6	
1000	204	0	1	2	14	53	62	47	18	7	2	0	1	0	188	92.16	146	71.57	27	13.24	28.1	34.4	
1100	191	0	0	1	17	63	59	27	16	3	4	1	0	0	173	90.55	126	66.14	24	12.34	27.3	34.2	
1200	199	0	0	1	23	59	52	38	19	6	3	0	0	0	175	88.16	128	64.48	27	13.6	27.4	34.3	
1300	255	0	1	4	29	73	69	44	23	8	5	1	1	0	222	87.06	163	63.73	37	14.51	27.4	34.8	
1400	243	0	0	3	23	74	62	41	26	12	1	2	0	0	217	89.3	159	65.23	40	16.46	27.8	35.3	
1500	330	0	1	6	30	86	103	64	27	11	4	0	0	0	293	88.92	224	67.98	41	12.44	27.4	34	
1600	416	0	7	5	46	133	110	75	32	9	1	1	0	1	359	86.3	250	60.1	42	10.1	26.5	33.4	
1700	385	0	2	5	30	105	116	78	32	14	2	1	0	1	348	90.39	266	69.09	49	12.73	27.7	34.4	
1800	248	0	1	2	15	55	69	64	26	12	3	2	1	1	231	93.13	190	76.77	43	17.37	29.3	35.7	
1900	169	0	1	1	13	45	45	35	21	7	2	1	1	0	155	91.69	118	70.03	30	17.8	28.7	36.2	
2000	107	0	0	0	8	22	25	24	15	9	4	1	0	1	100	92.99	83	77.57	29	26.64	30.4	38.8	
2100	67	0	0	0	3	8	17	18	12	7	3	1	1	0	64	95.49	58	87.22	22	32.33	32.1	40	
2200	44	0	0	3	3	8	7	10	7	3	2	3	0	1	39	88.64	33	75	14	31.82	31.2	40.5	
2300	19	0	0	0	1	3	4	4	3	4	1	1	0	0	19	97.37	17	89.47	8	42.11	34	44.2	
07-19	3372	0	17	37	284	931	972	668	309	107	36	10	2	2	3035	90	2298	68.14	465	13.78	27.7	34.6	
06-22	3817	0	18	39	310	1016	1073	773	380	143	50	12	4	2	3451	90.4	2648	69.36	590	15.44	28.1	35.1	
05-00	3880	0	18	41	313	1027	1084	787	389	149	53	16	4	3	3508	90.41	2698	69.52	612	15.76	28.1	35.2	
00-00	3962	0	18	41	314	1029	1093	802	402	166	67	22	7	4	3590	90.6	2777	70.08	666	16.81	28.4	35.6	

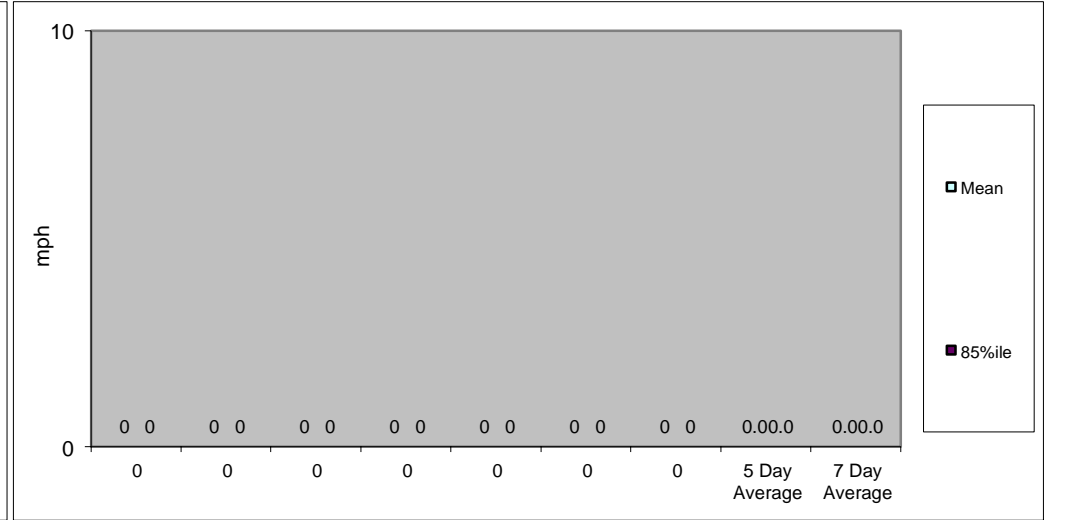
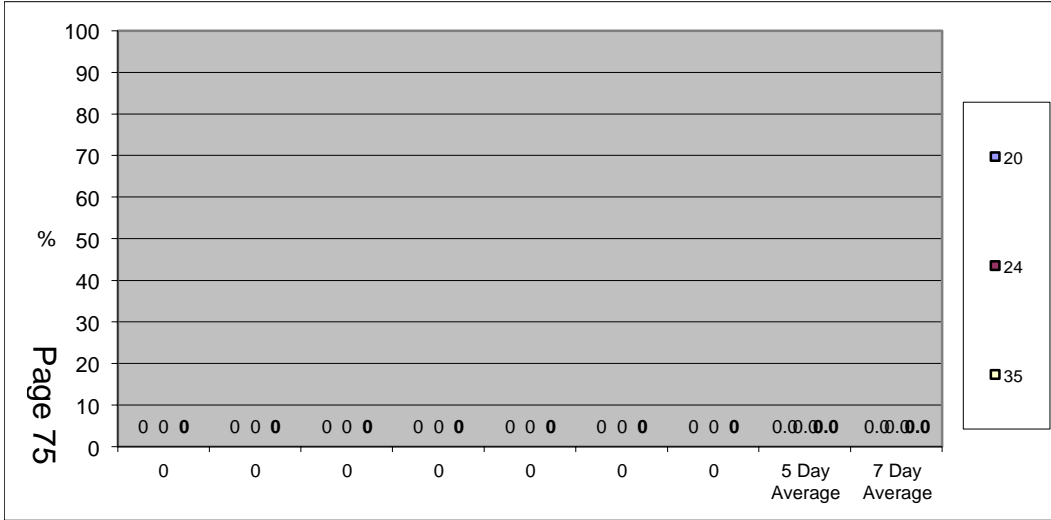
Job Name/ Title		Site 0 Location ()														Speed Limit (PSL)		ACPO (SL1)		DFT (SL2)		Mean Speed	85%ile Speed
17 January 2024		to 00/01/00														Direction Two-Way							
Time Period	Total Vehicles	0	5	10	15	20	25	30	35	40	45	50	55	60	20	20	24	24	35	35	Mean Speed	85%ile Speed	
		5	10	15	20	25	30	35	40	45	50	55	60	130			ACPO	ACPO	DFT	DFT			

Virtual Week																						
0	0	0	0	0	0	0	0	0	0	0	0	0	0	0	0	0	0	0	0	0	0	0
0	0	0	0	0	0	0	0	0	0	0	0	0	0	0	0	0	0	0	0	0	0	0
0	0	0	0	0	0	0	0	0	0	0	0	0	0	0	0	0	0	0	0	0	0	0
0	0	0	0	0	0	0	0	0	0	0	0	0	0	0	0	0	0	0	0	0	0	0
0	0	0	0	0	0	0	0	0	0	0	0	0	0	0	0	0	0	0	0	0	0	0
0	0	0	0	0	0	0	0	0	0	0	0	0	0	0	0	0	0	0	0	0	0	0
0	0	0	0	0	0	0	0	0	0	0	0	0	0	0	0	0	0	0	0	0	0	0

5 Day Average																							
[--]	0	0	0	0	0	0	0	0	0	0	0	0	0	0	0	0	#DIV/0!	0	#DIV/0!	0	#DIV/0!	0.0	0.0

7 Day Average																							
[--]	0	0	0	0	0	0	0	0	0	0	0	0	0	0	0	0	#DIV/0!	0	#DIV/0!	0	#DIV/0!	0.0	0.0

Total Vehicles																								
[--]	0	0	0	0	0	0	0	0	0	0	0	0	0	0	0	0	0	0.0	0	0.0	0	0.0	0.0	0.0



Classification Schemes

Scheme F Classification Scheme (Non-metric)

Scheme F is an attempt to implement the FHWA's visual classification scheme as an axle-based classification scheme. This is one of several interpretations.

Class	Vehicle Type	No. of Axles	Axle spacing in feet				
			Axle 1 to 2	Axle 2 to 3	Axle 3 to 4	Axle 4 to 5	Axle 5 to 6
1	motorcycle	2	<6.0				
2	passenger car	2	6.0 - 10.0				
	car + 1 axle trailer	3	<10.0	10.0 - 18.0			
	car + 2 axle trailer	4	<10.0		<3.5		
3	pickup	2	10.0 - 15.0				
	pickup + 1 axle trailer	3	10.0 - 15.0	10.0 - 18.0			
	pickup + 2 axle trailer	4	10.0 - 15.0		<3.5		
	pickup + 3 axle trailer	5	9.9 - 15.0			<3.5	
4	bus	2	>20.0				
	bus	3	>19.0				
5	single unit truck - dual rear axle	2	14.9 - 20.0			<3.5	
6	3 axle truck	3		<18.0			
7	4 axle truck	4					
8	2S1	3		>18.0			
	2S2	4		>5.0	>3.5		
	3S1	4		<5.0	>10.0		
9	3S2	5		<6.1		3.5 - 8.0	
	5 axle combination	5					
10	6 axle combination	6			3.5 - 5.0		
	3S3	6					
11	2S1-2	5		>6.0			
12	3S1-2	6					>10.0
13	truck	7 or more					